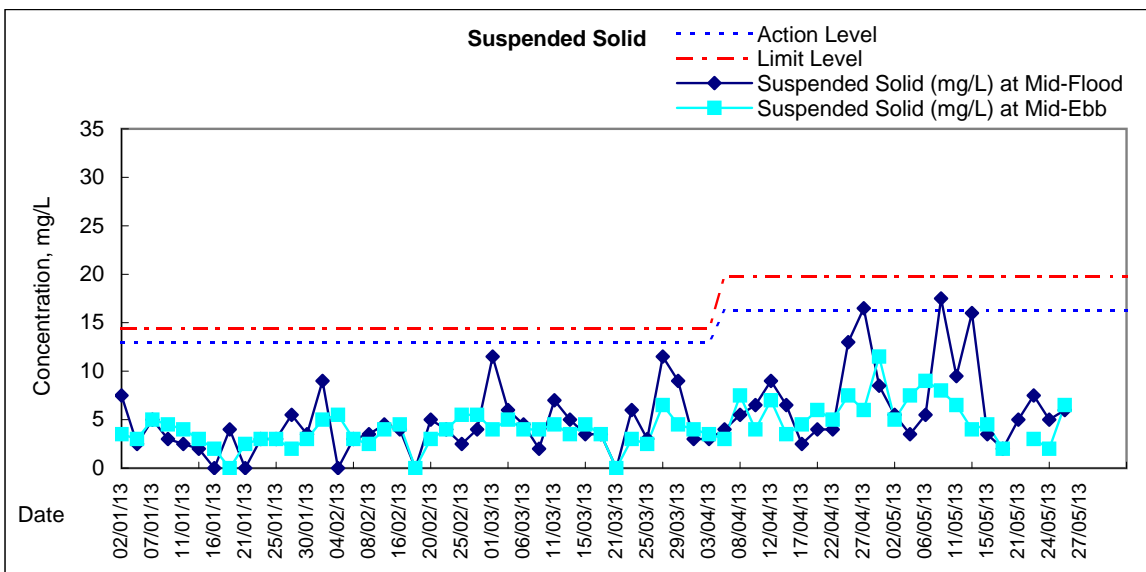
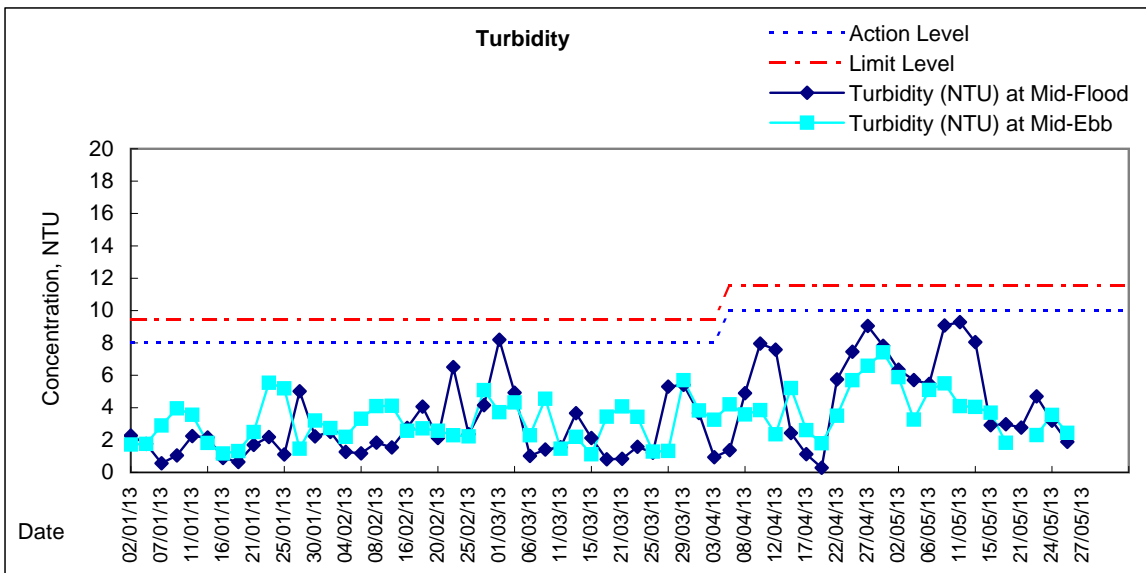
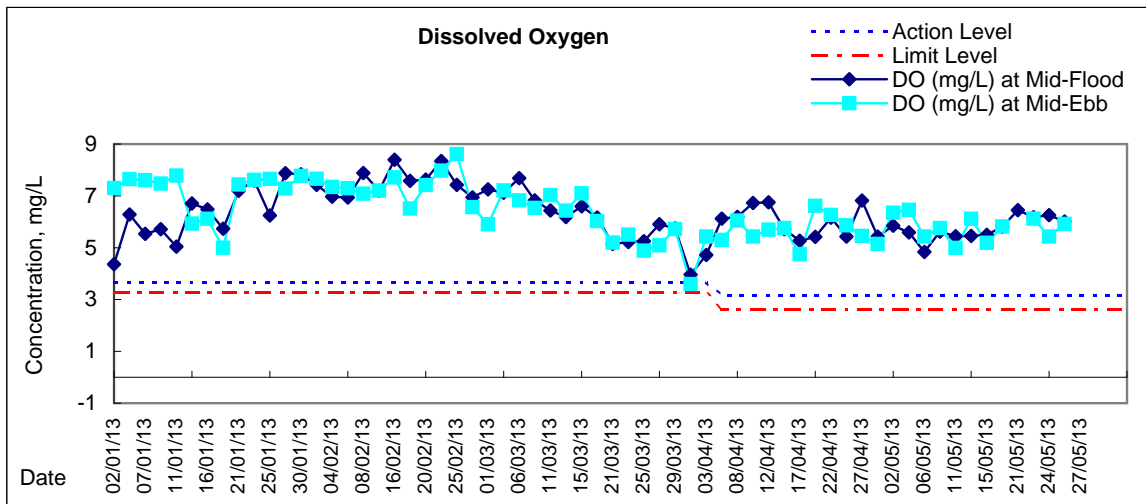
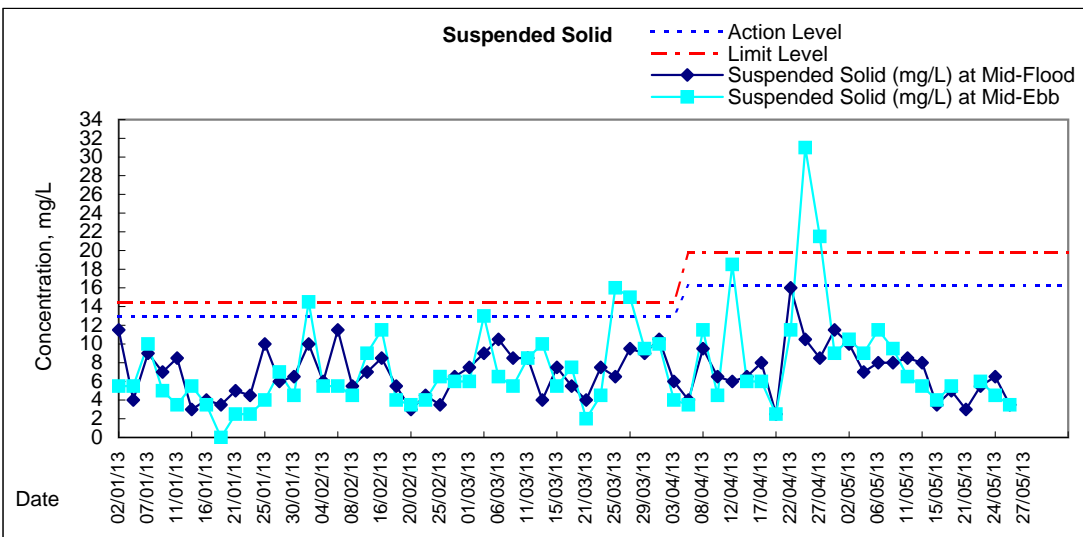
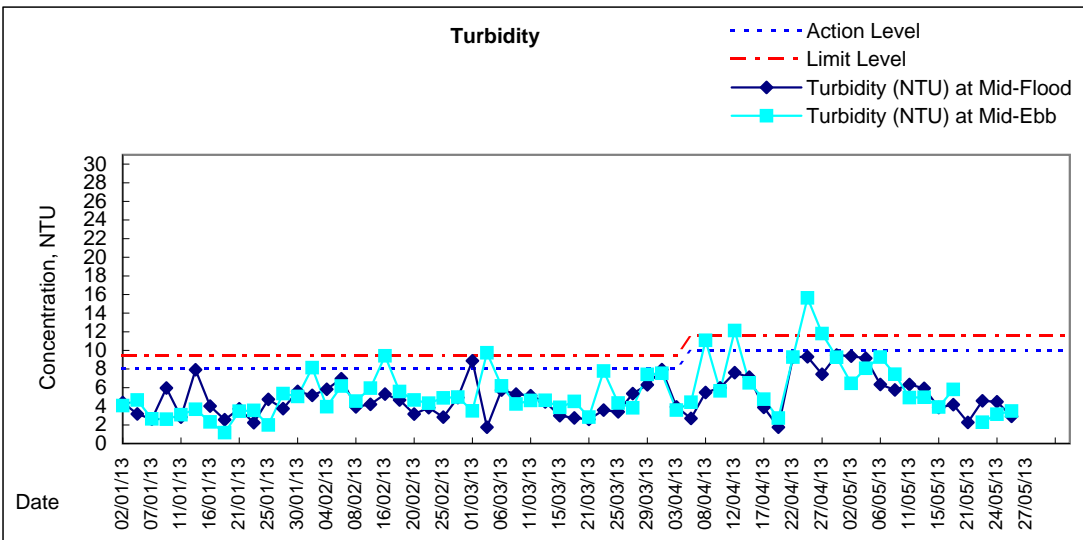
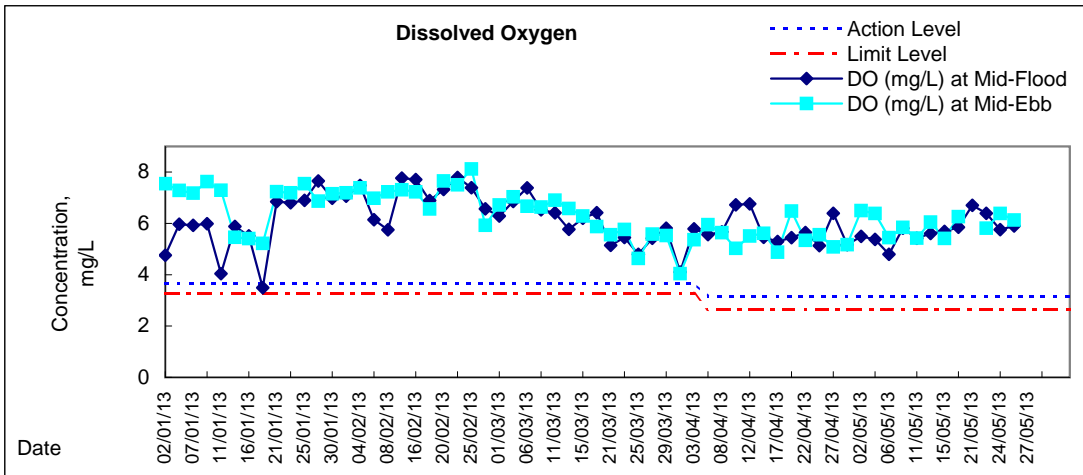


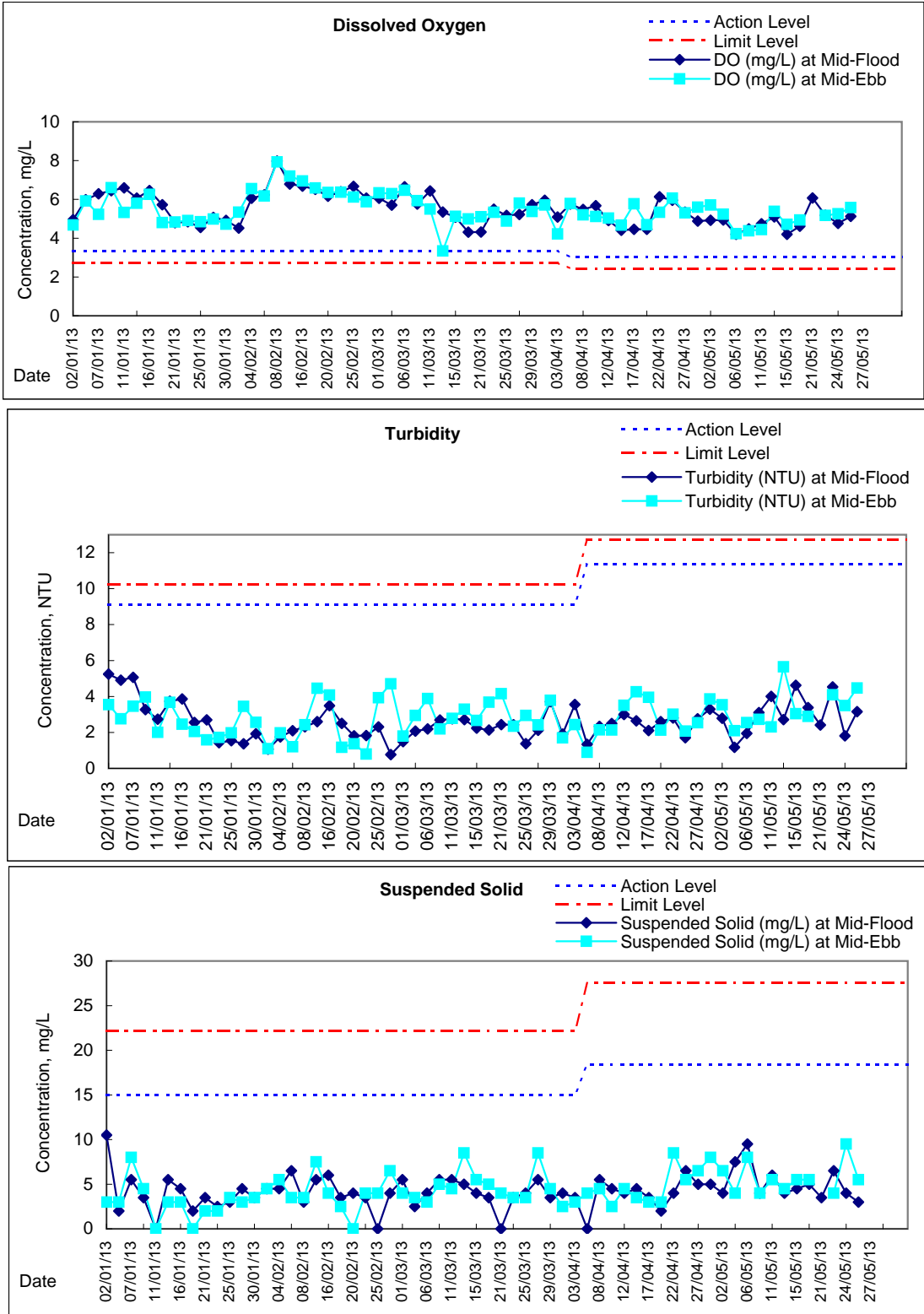


# Graphic Presentation of Water Quality Result of WSD17 - Quarry Bay





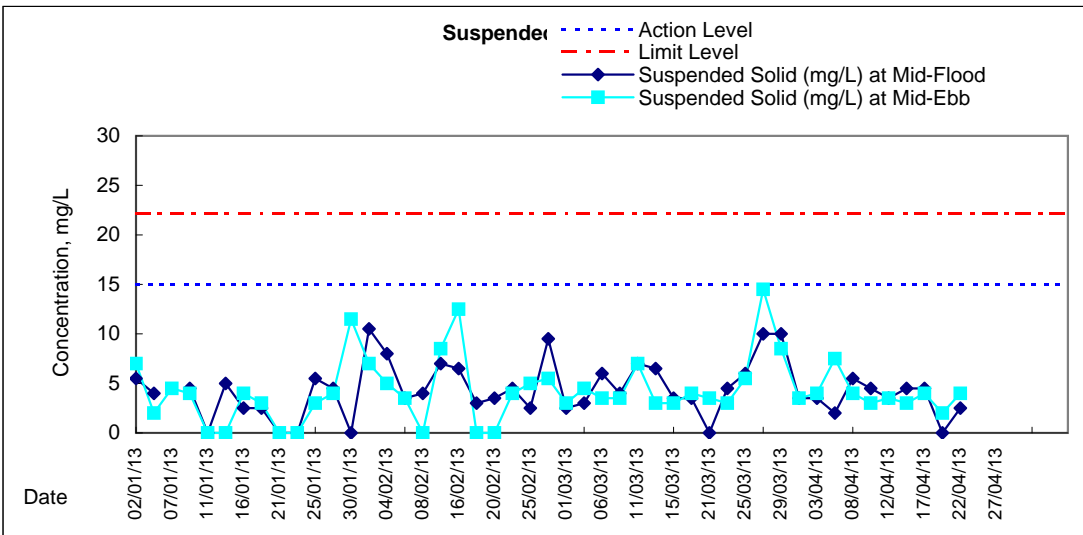
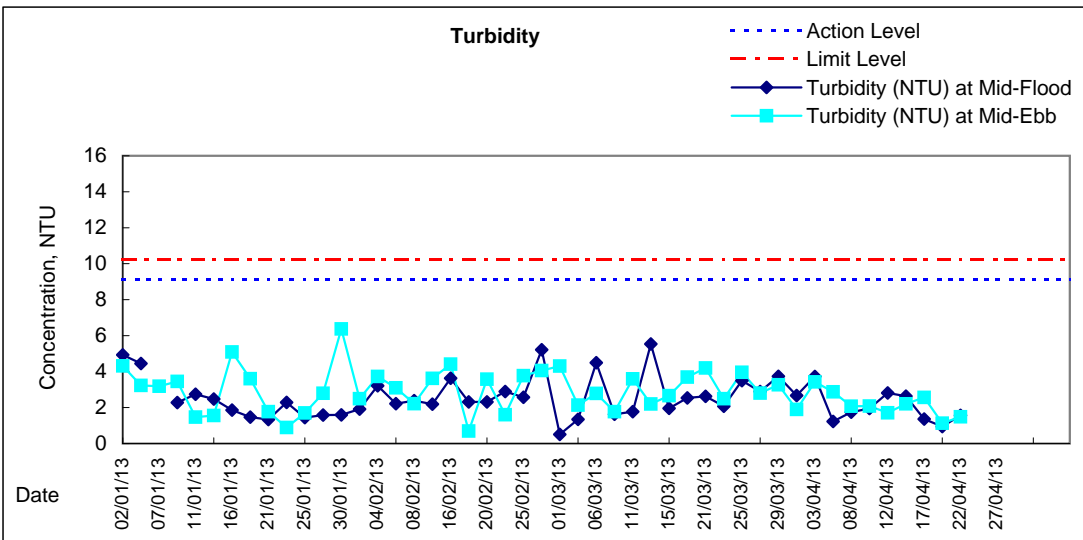
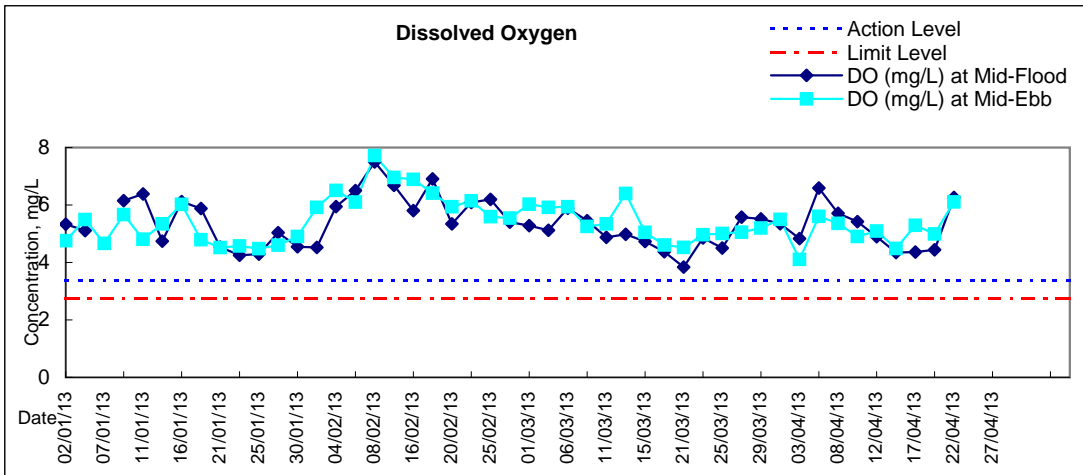
## Graphic Presentation of Water Quality Result of C1 - HKCEC



Remarks: Due to the blockage of road access to C1 on 15 Dec 2012 during mid-flood, the water quality monitoring was cancelled at C1 on 15 Dec 2012 during mid-flood.

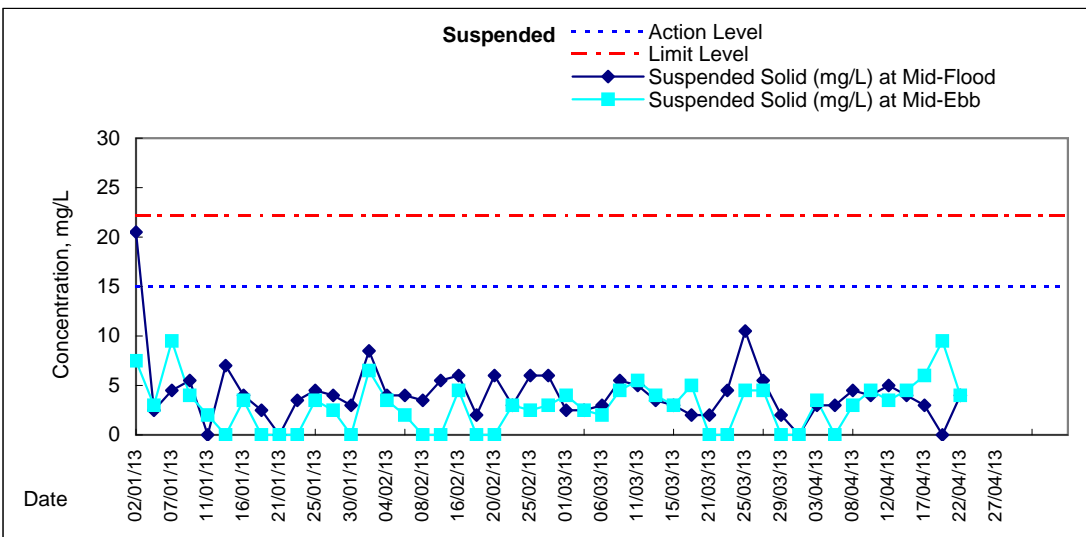
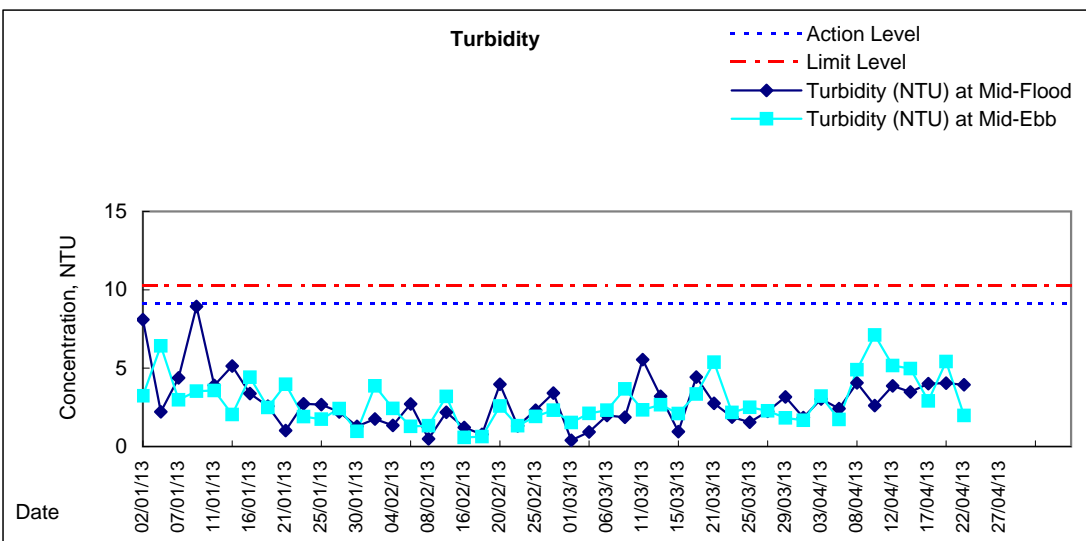
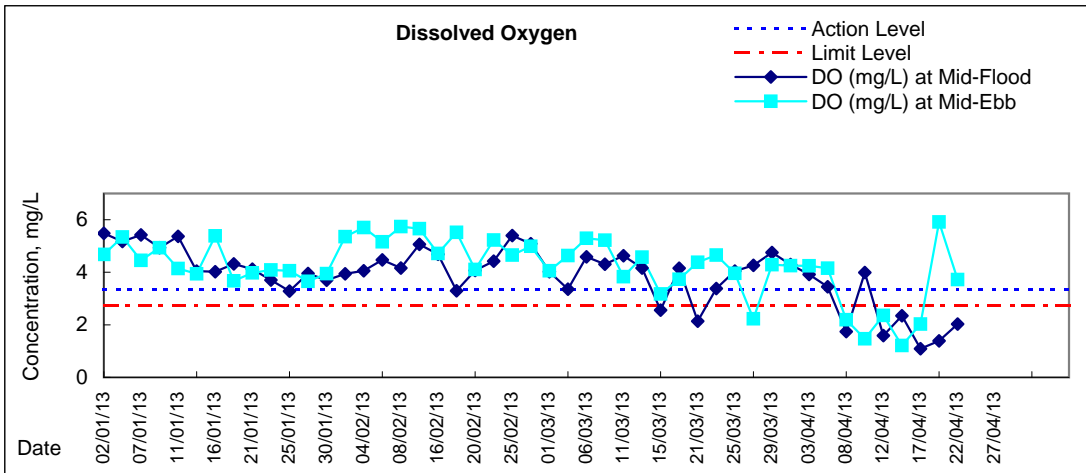


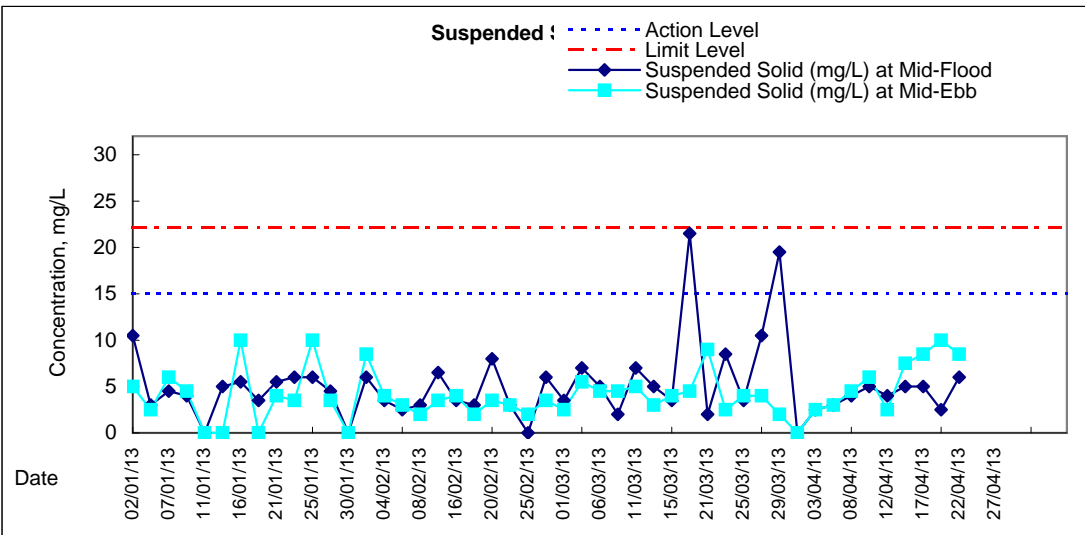
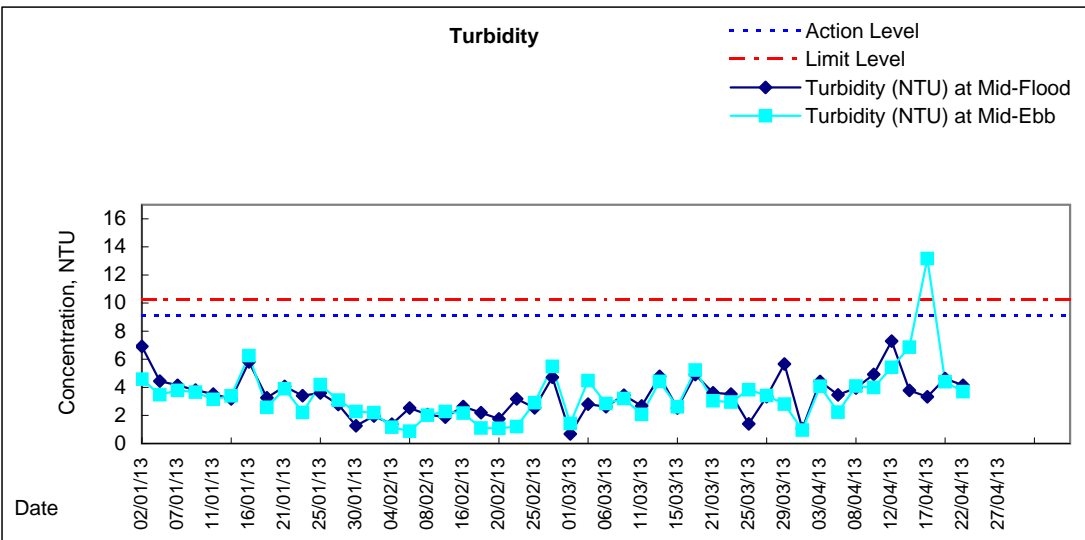
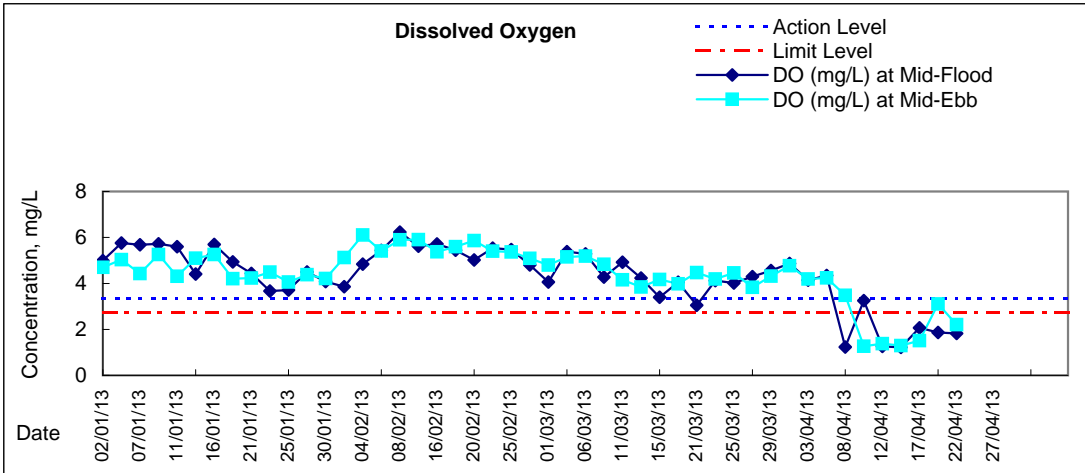
### Graphic Presentation of Water Quality Result of C2 - TH / APA / SOC

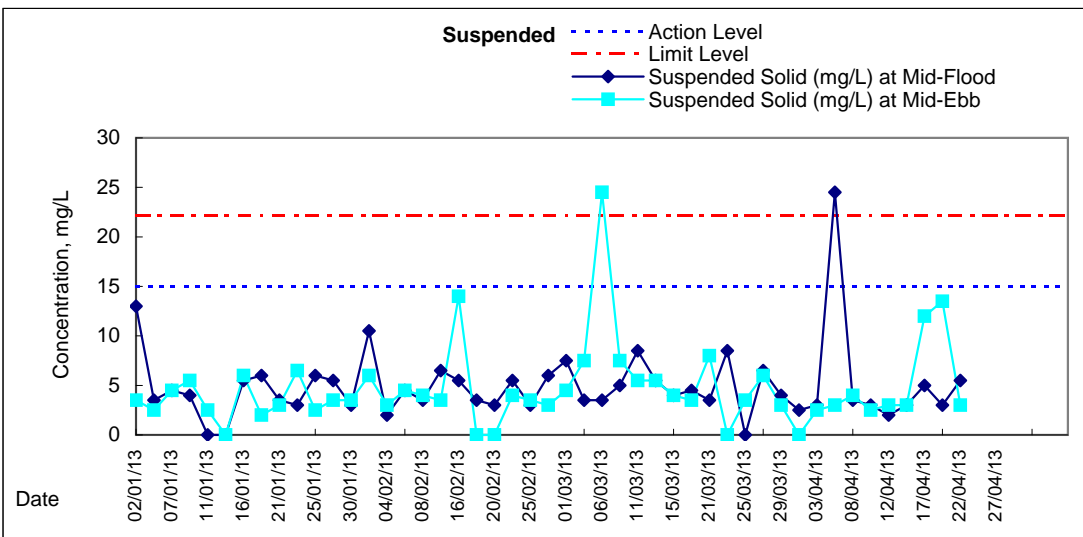
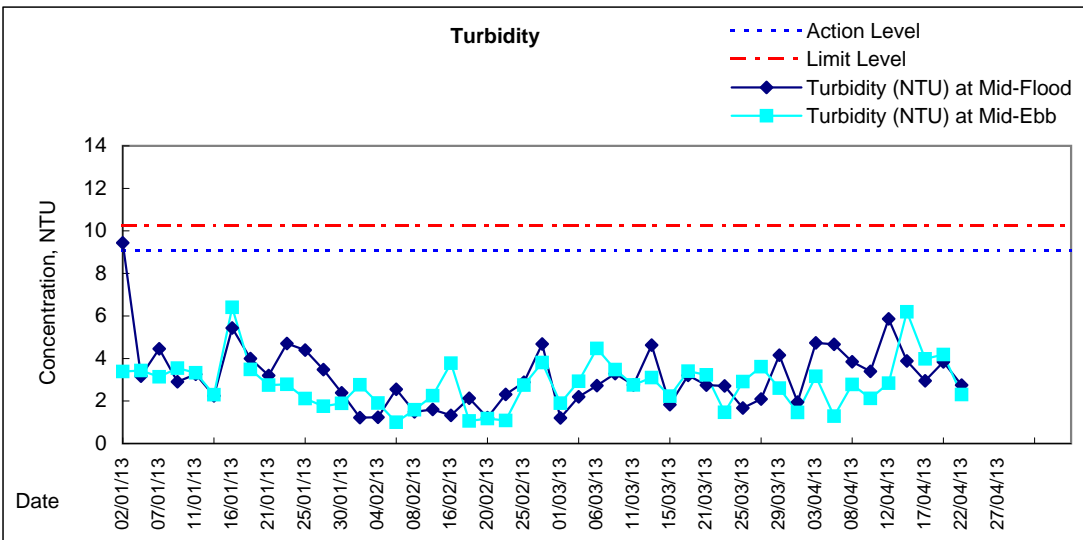
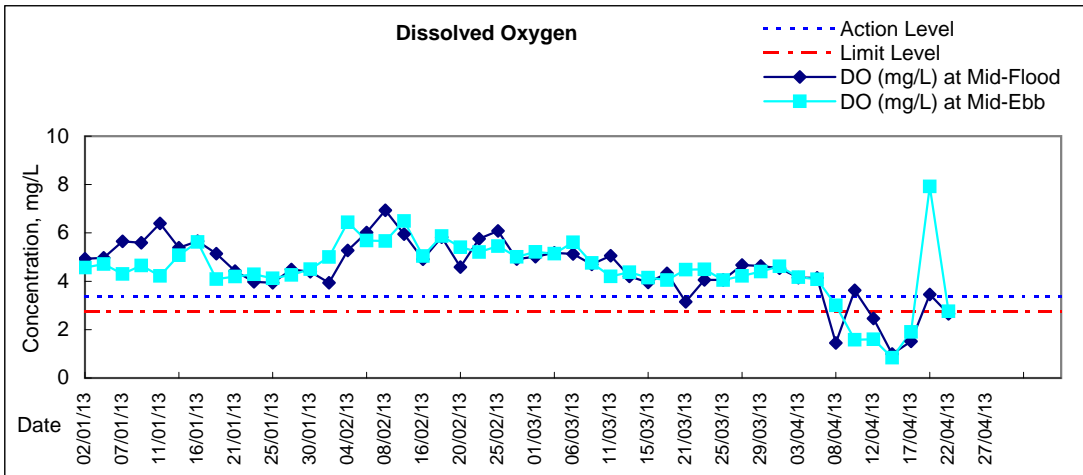




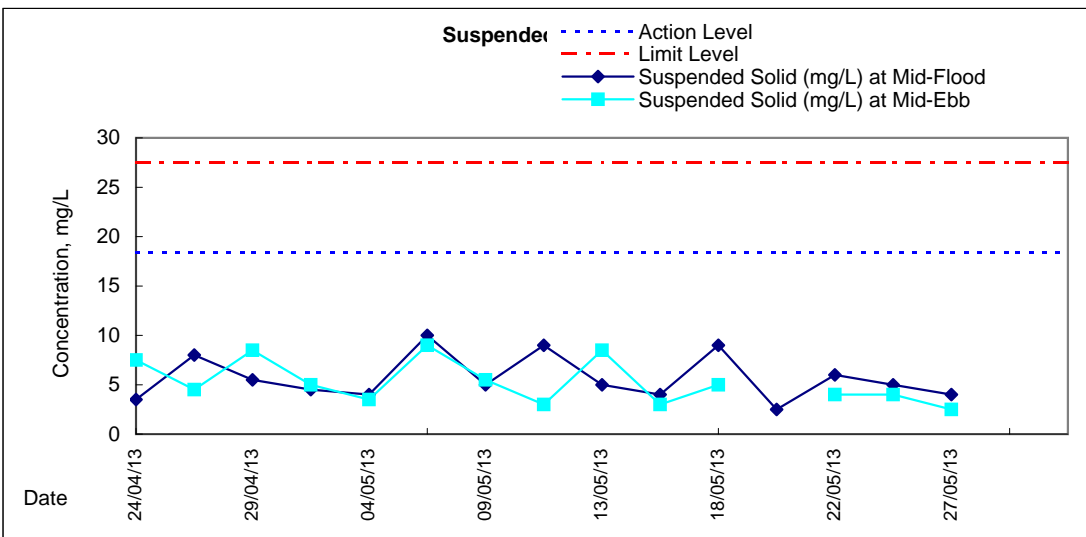
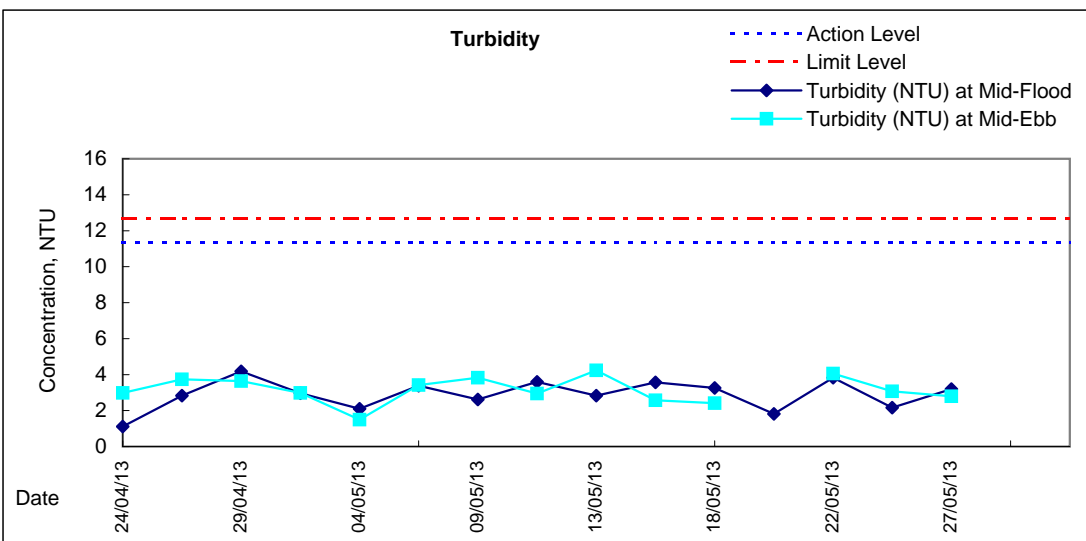
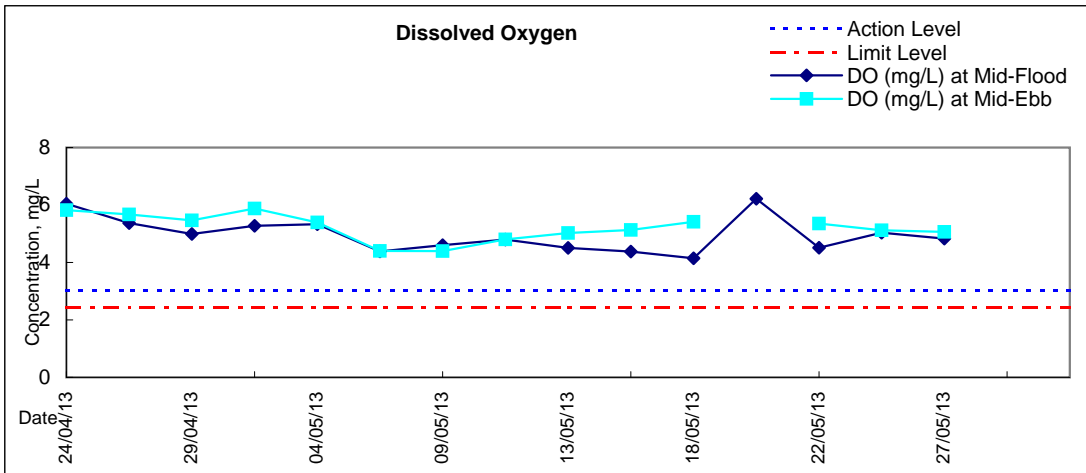
# Graphic Presentation of Water Quality Result of C3 - WCT and GEC





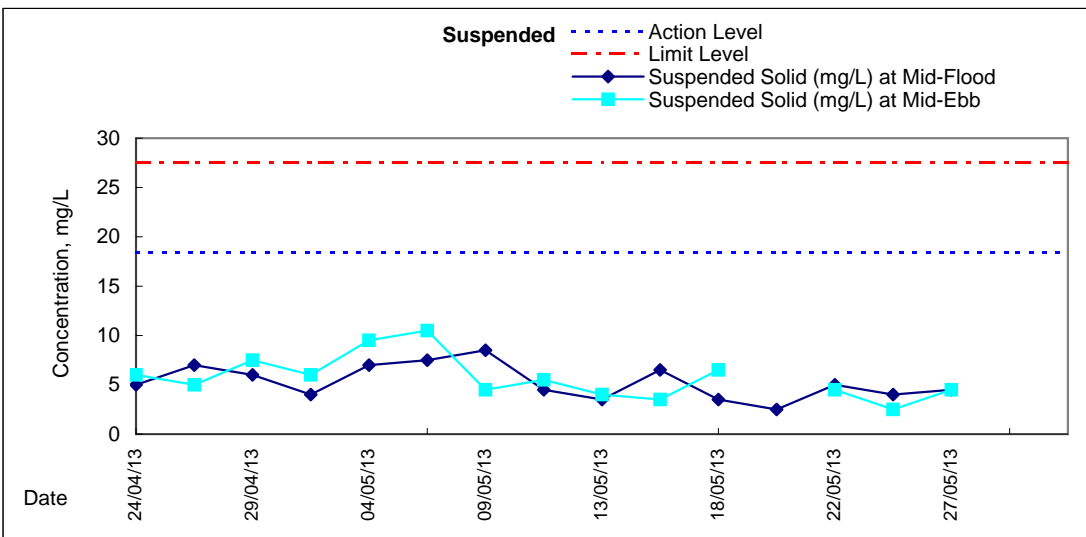
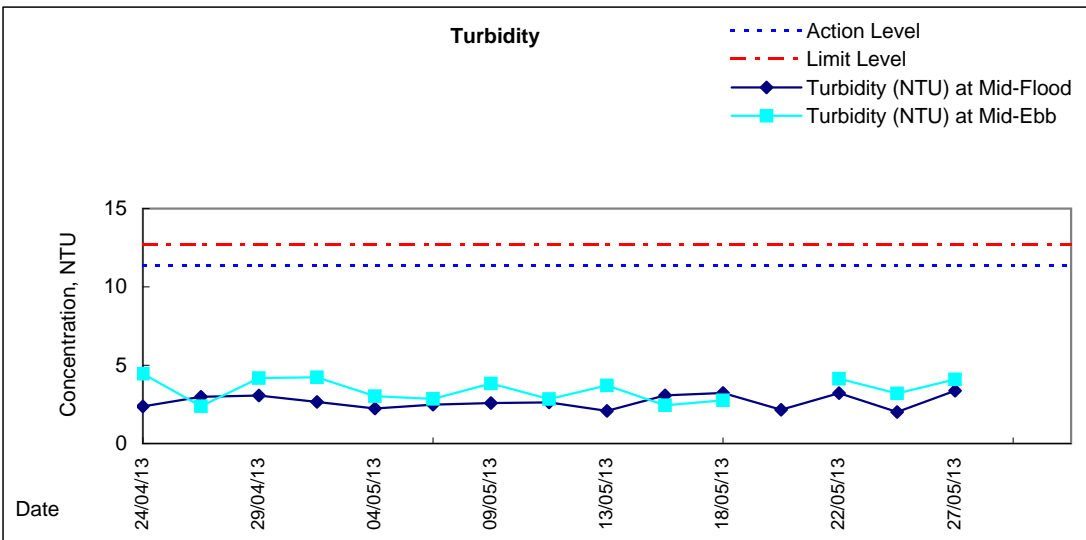
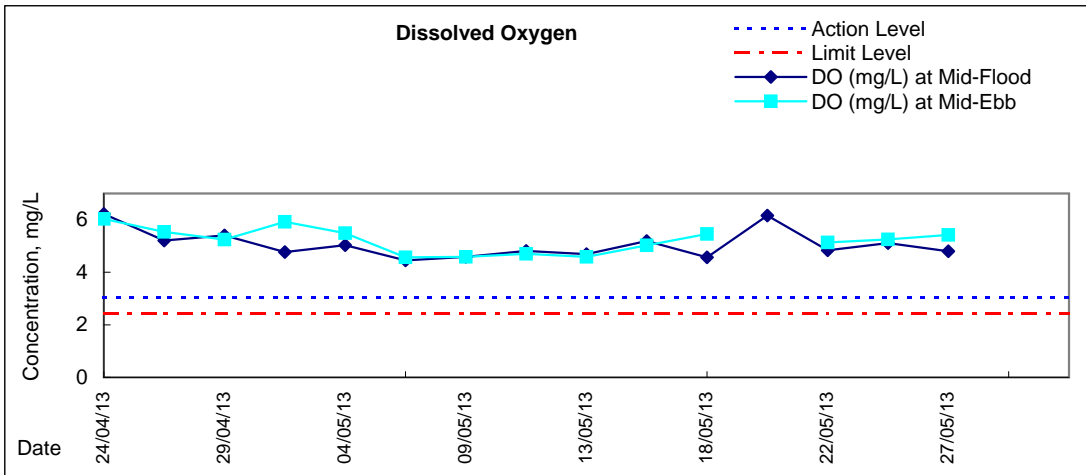


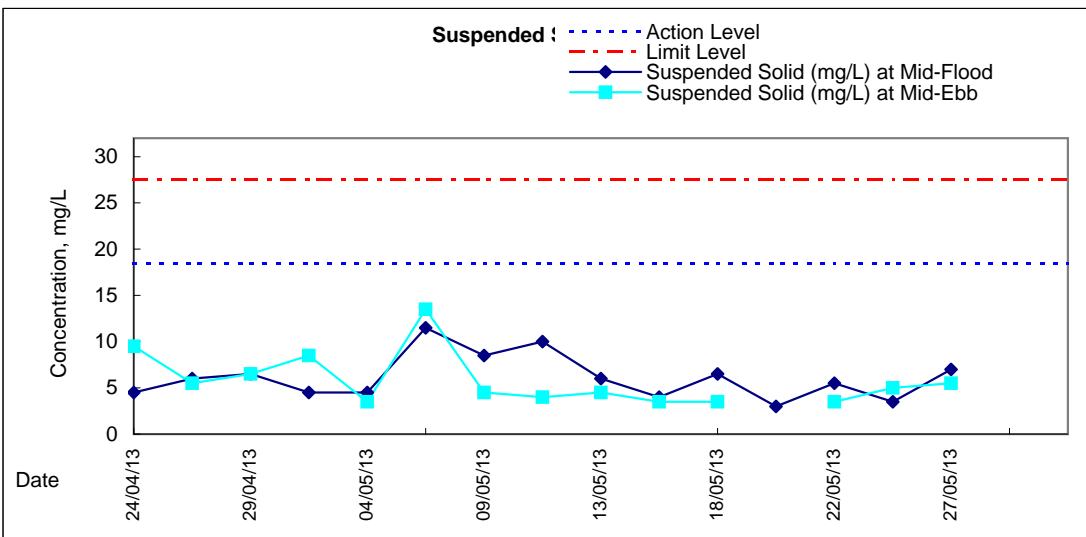
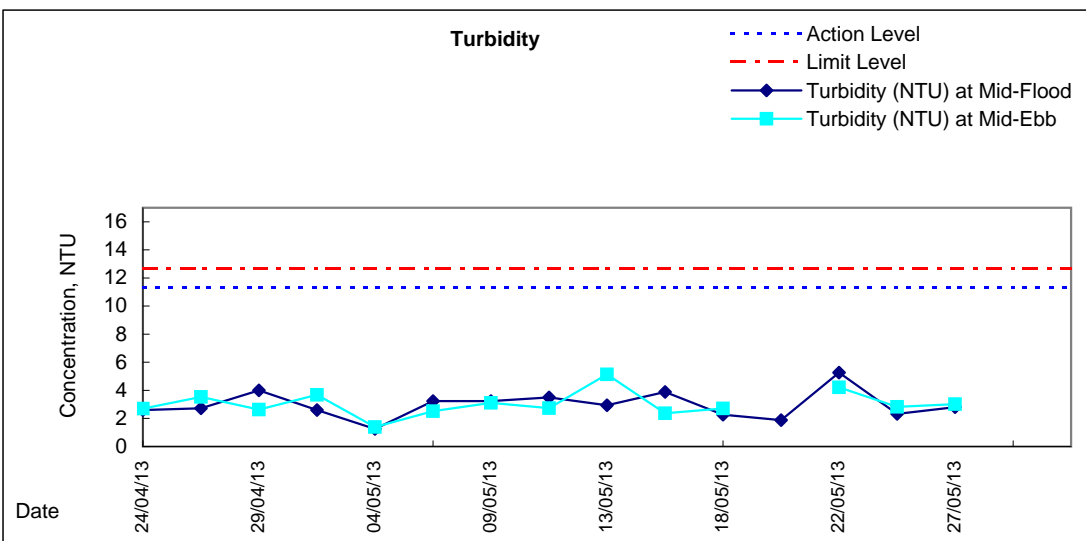
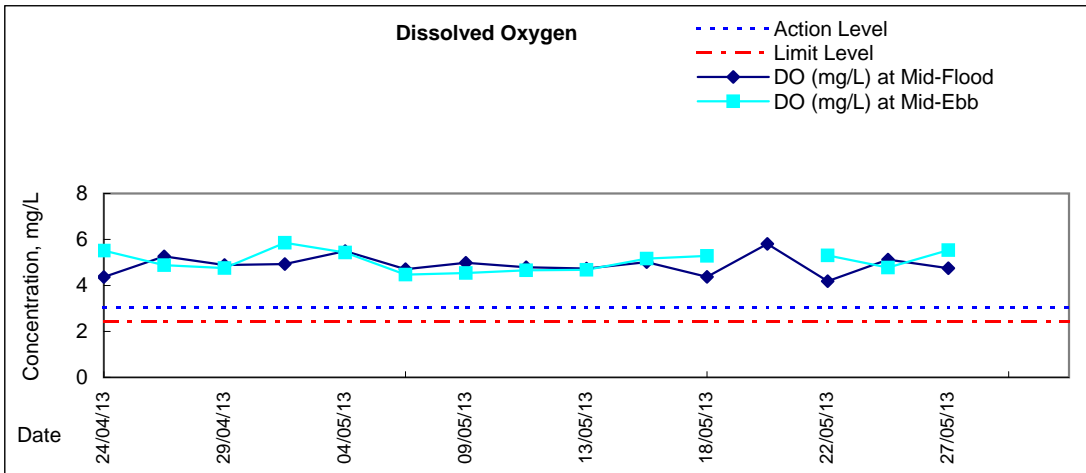






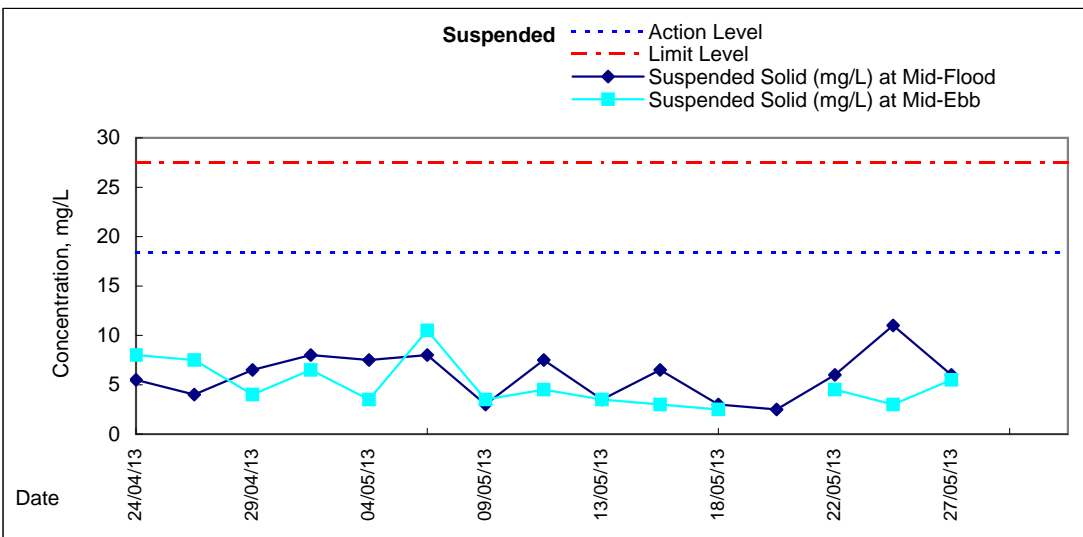
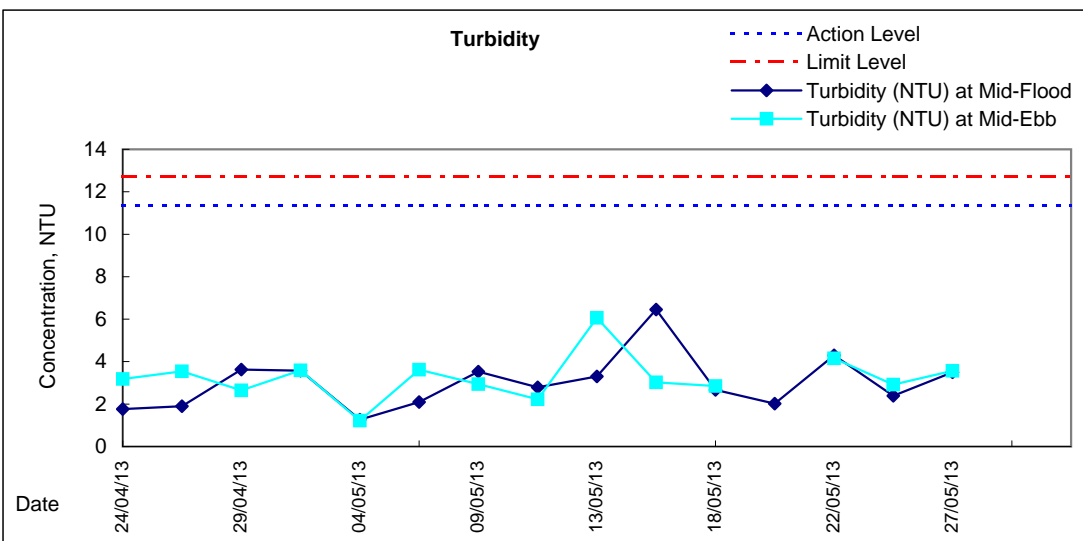
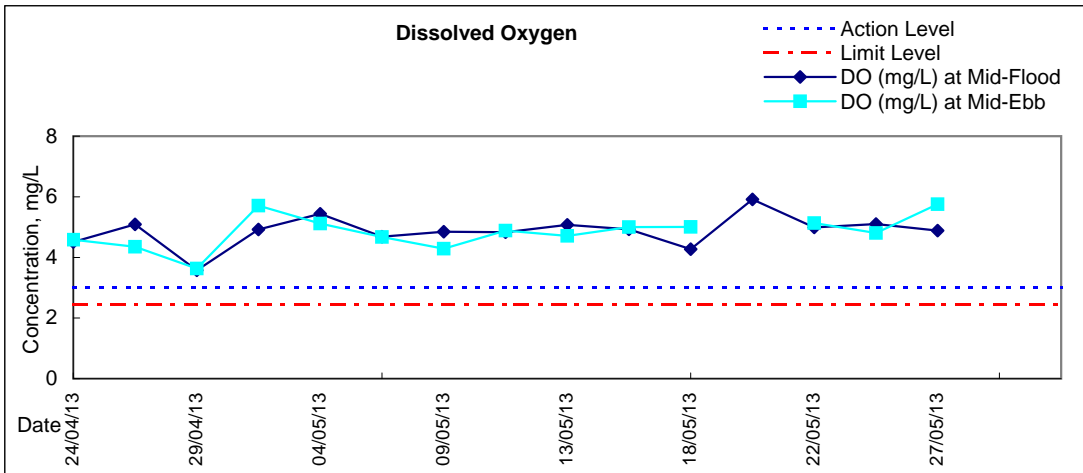
# Graphic Presentation of Water Quality Result of P1 - HKCEC Phase I





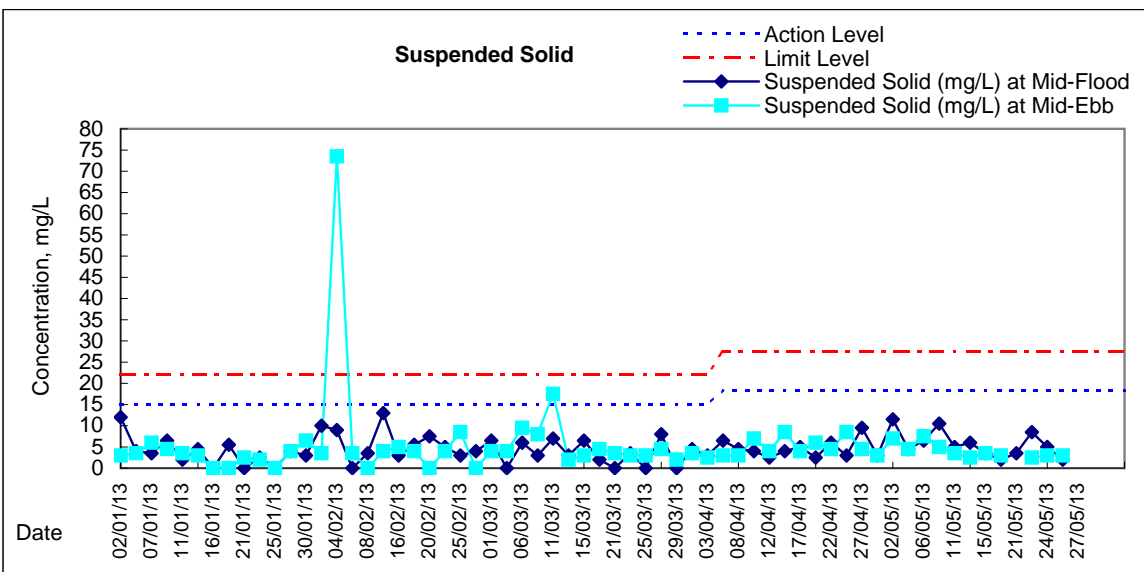
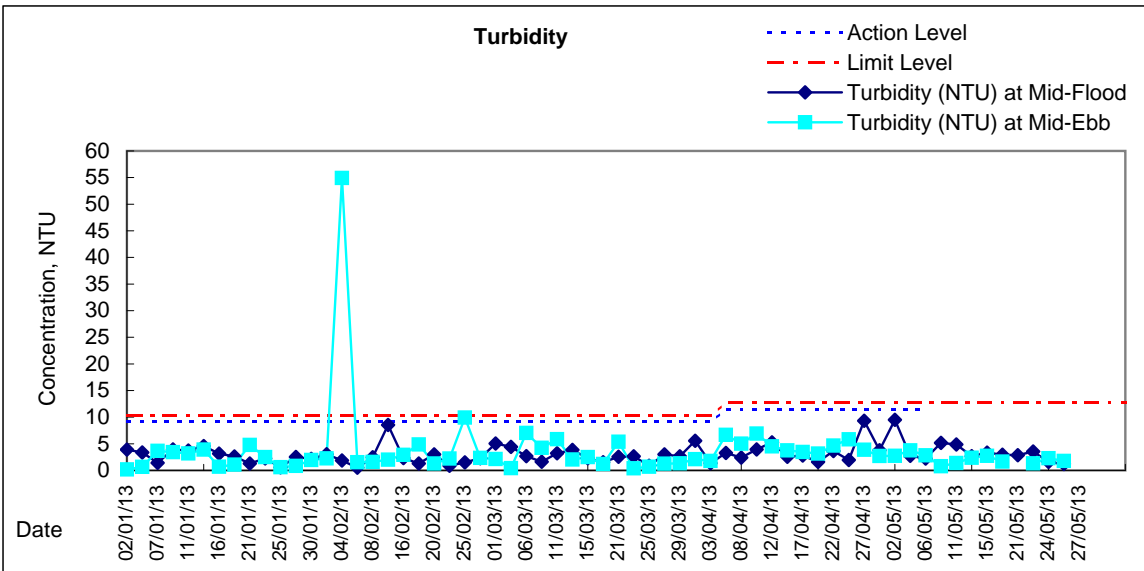
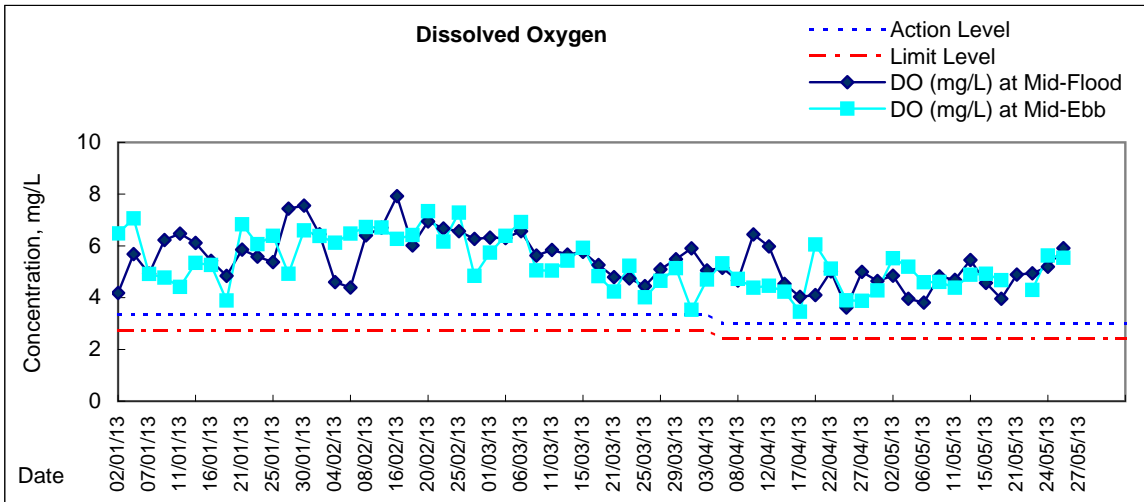


### Graphic Presentation of Water Quality Result of P5 - WCT / RT / IT



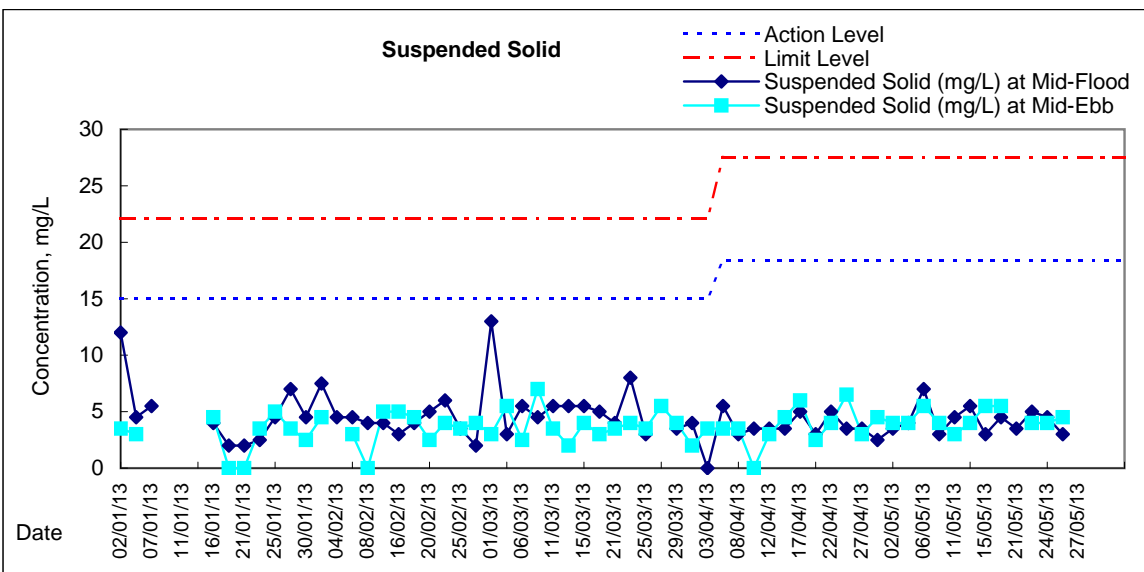
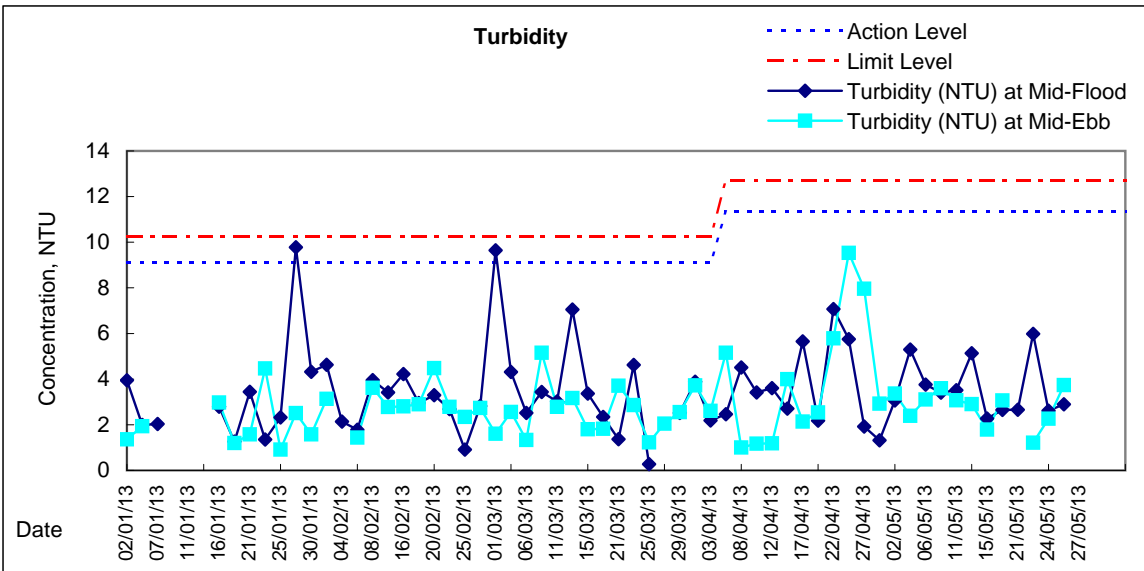
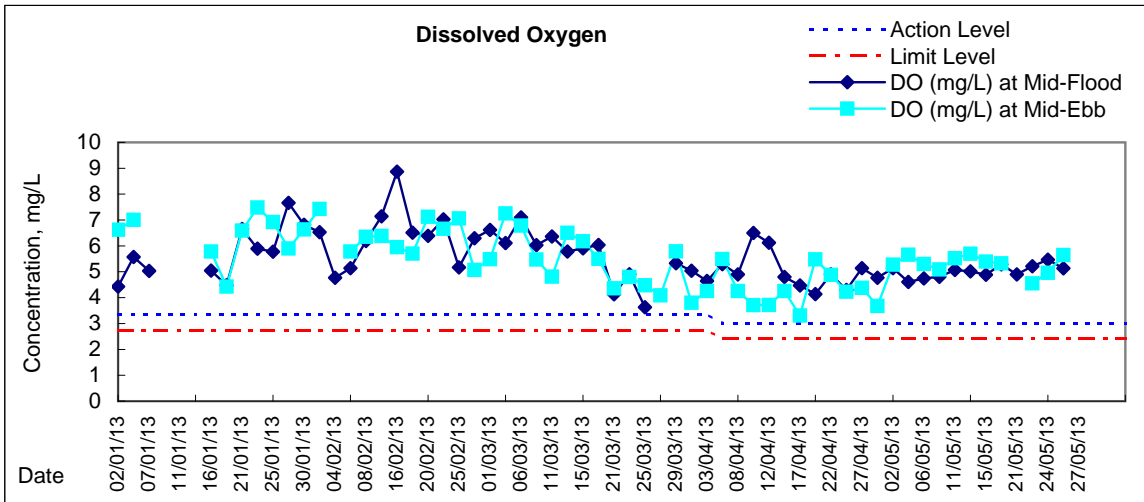


### Graphic Presentation of Water Quality Result of C5e - SHKC (Eastern)



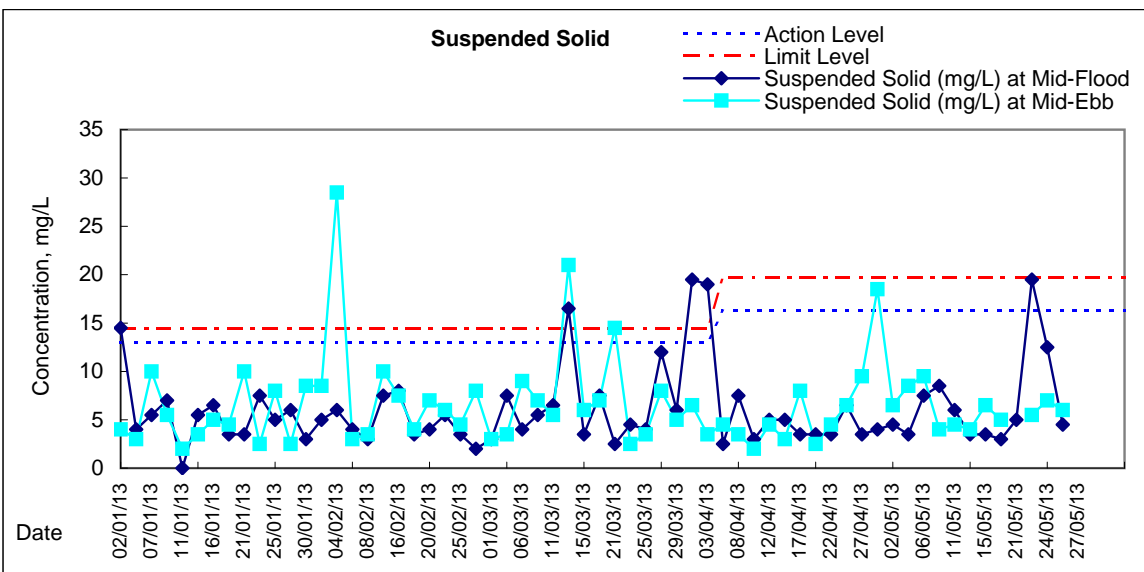
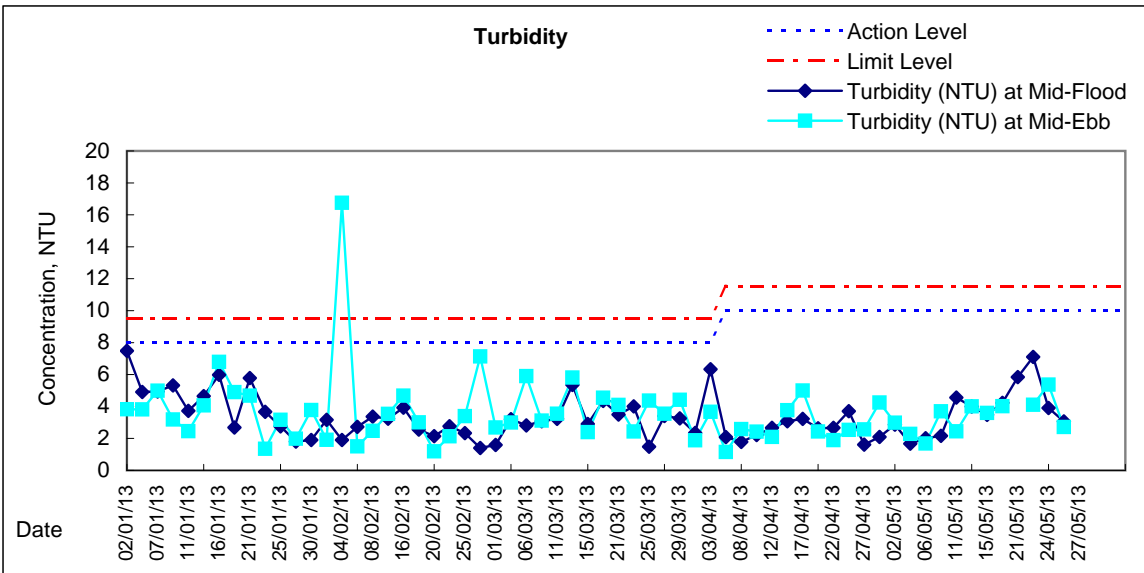
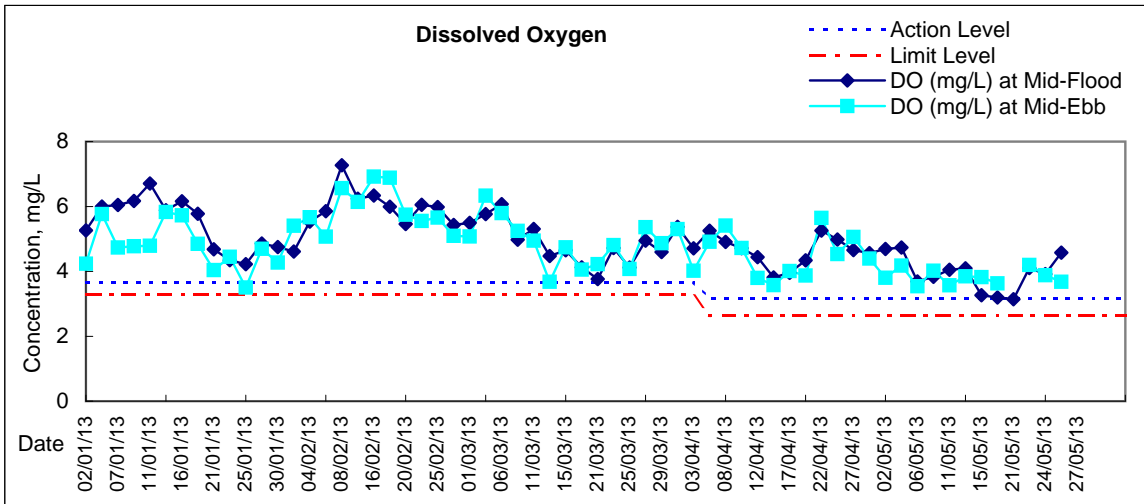


# Graphic Presentation of Water Quality Result of C5w - SHKC (Western)



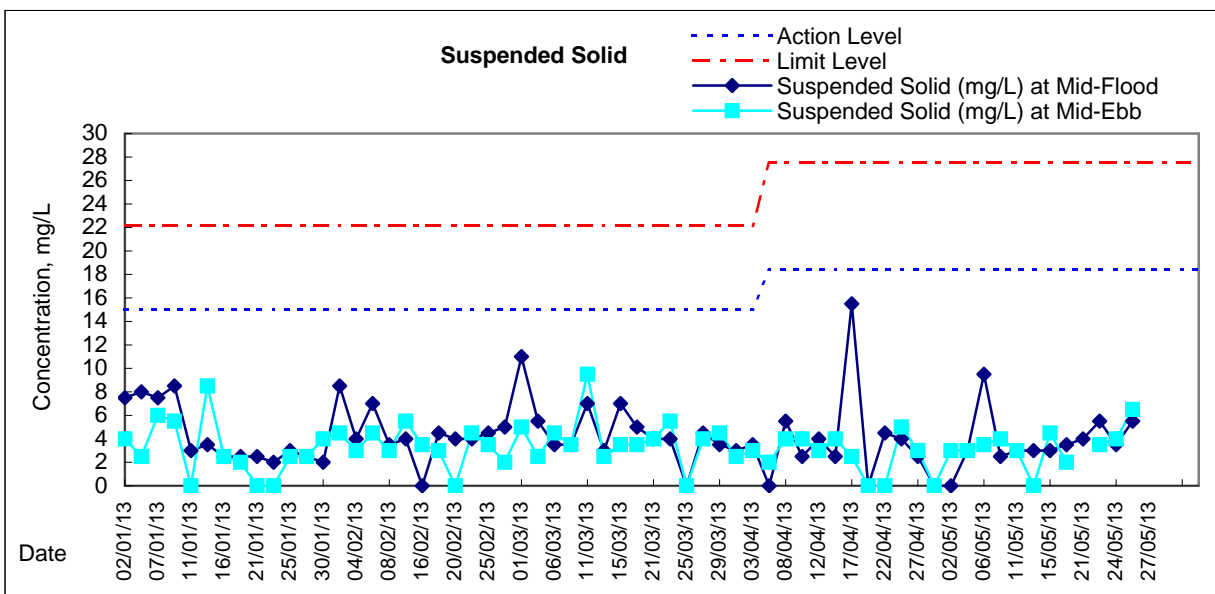
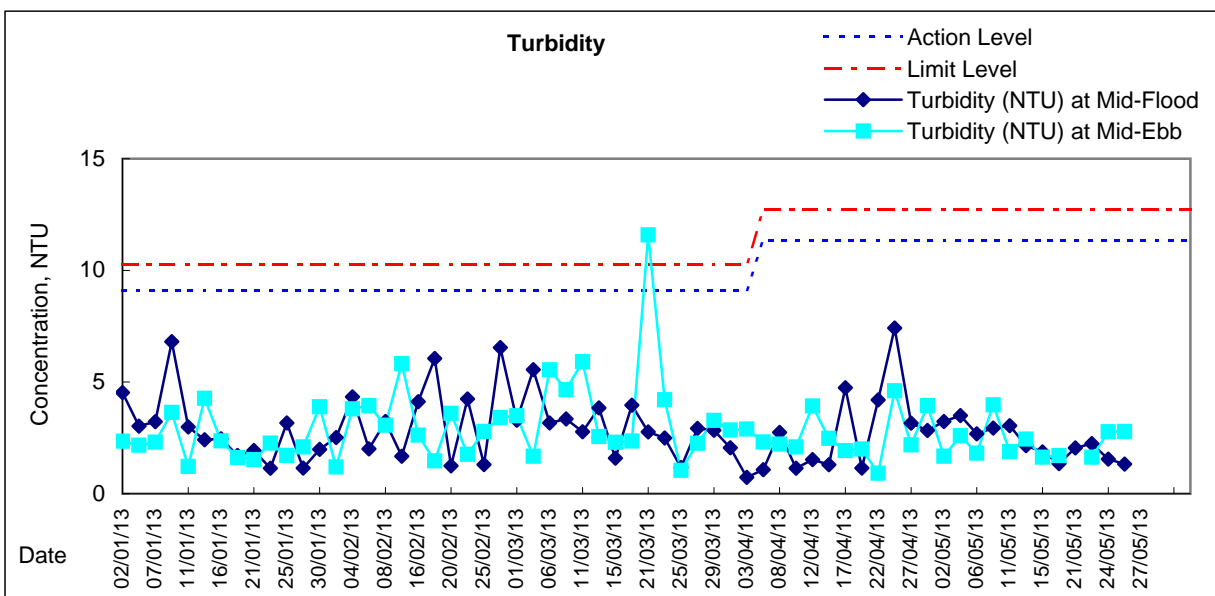
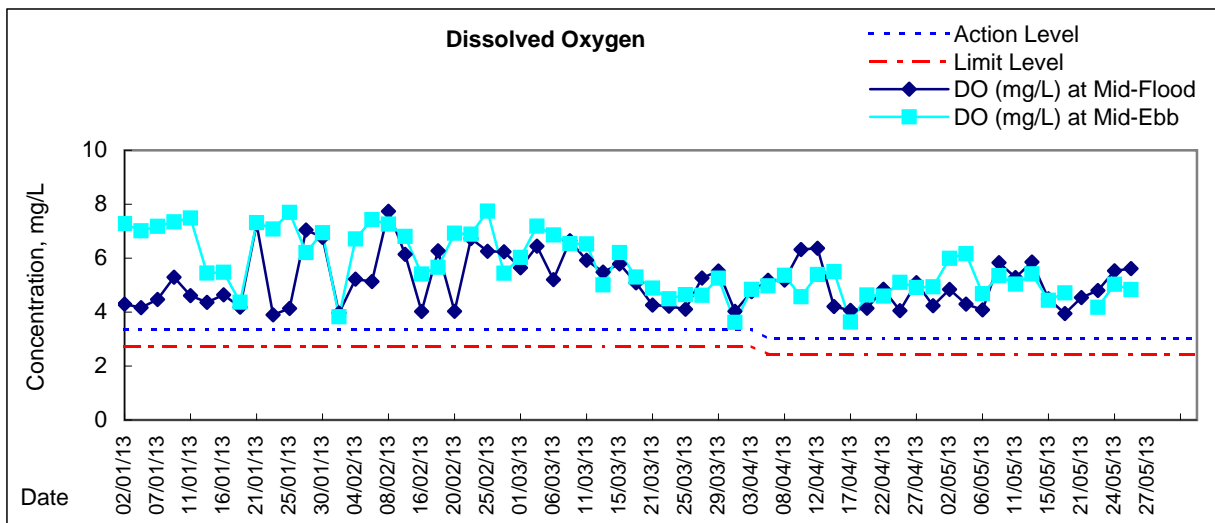


# Graphic Presentation of Water Quality Result of WSD21 - Wan Chai





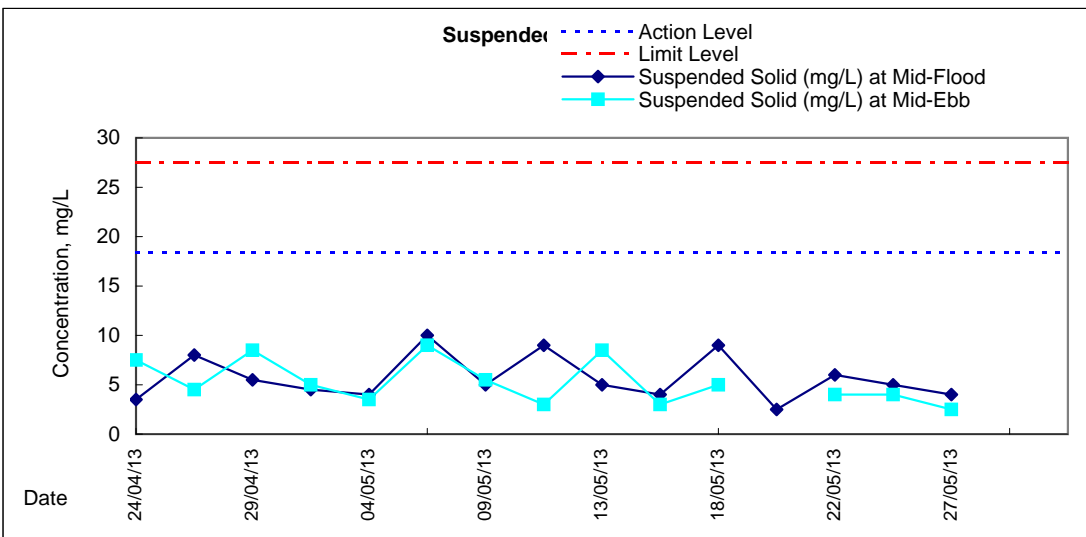
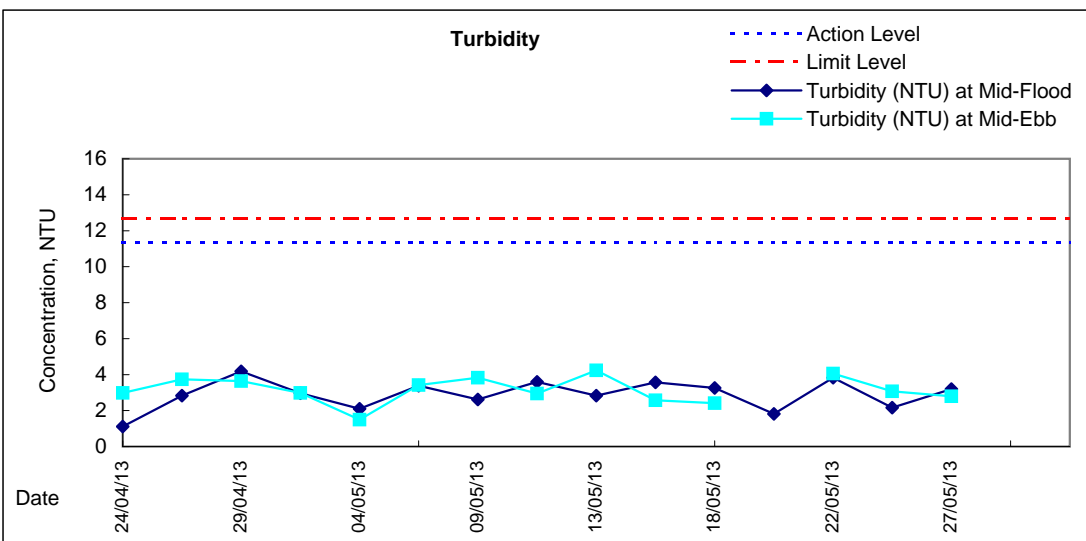
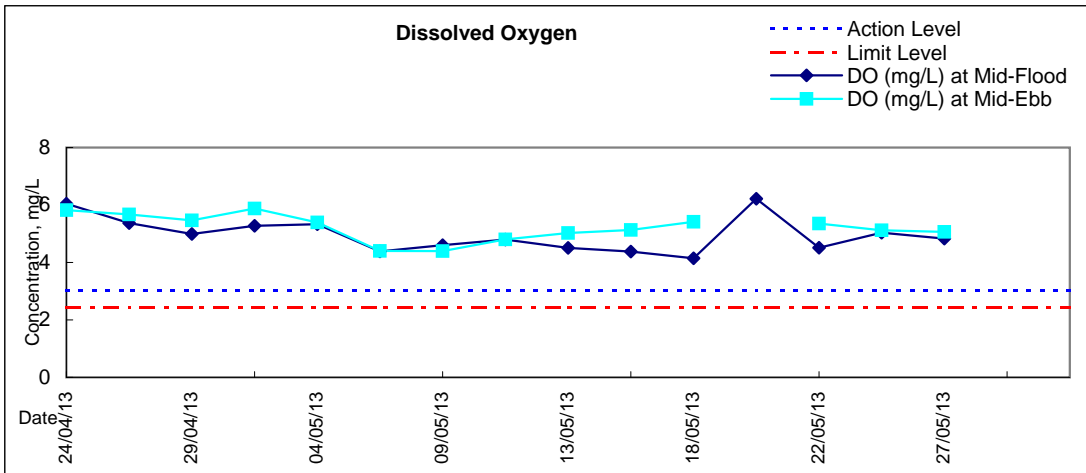
## Graphic Presentation of Water Quality Result of C7 - Windsor House



Remarks:

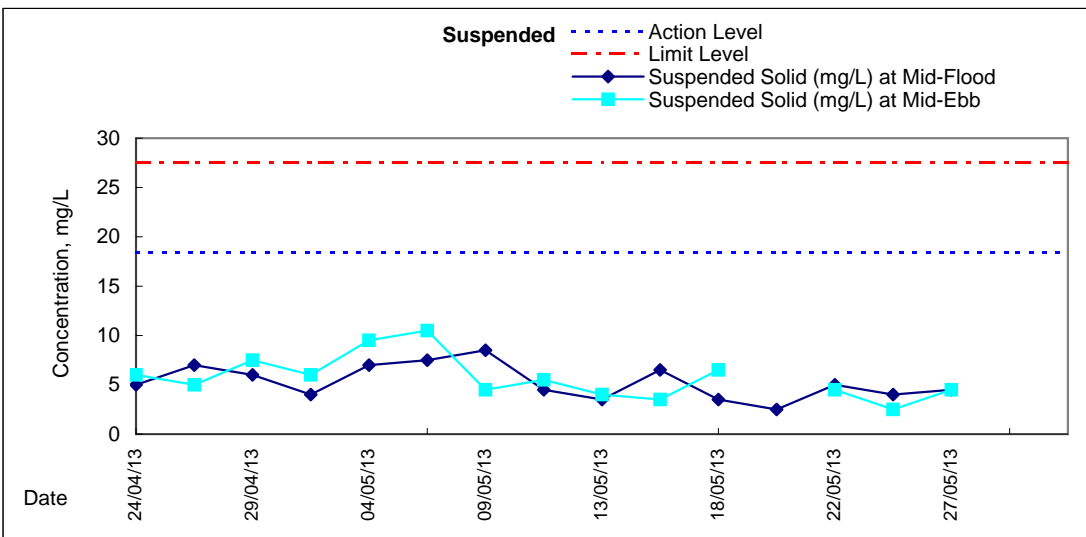
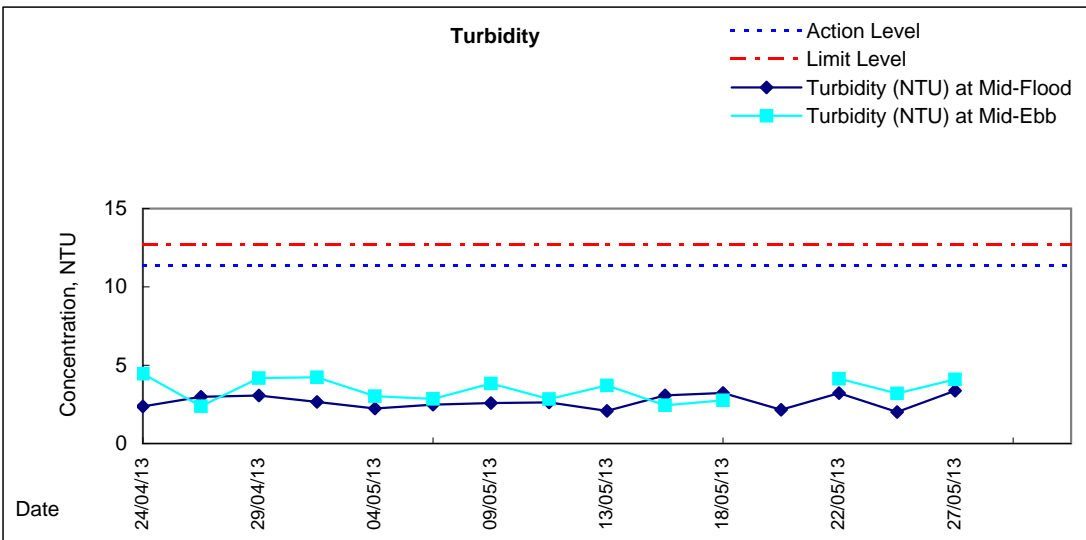
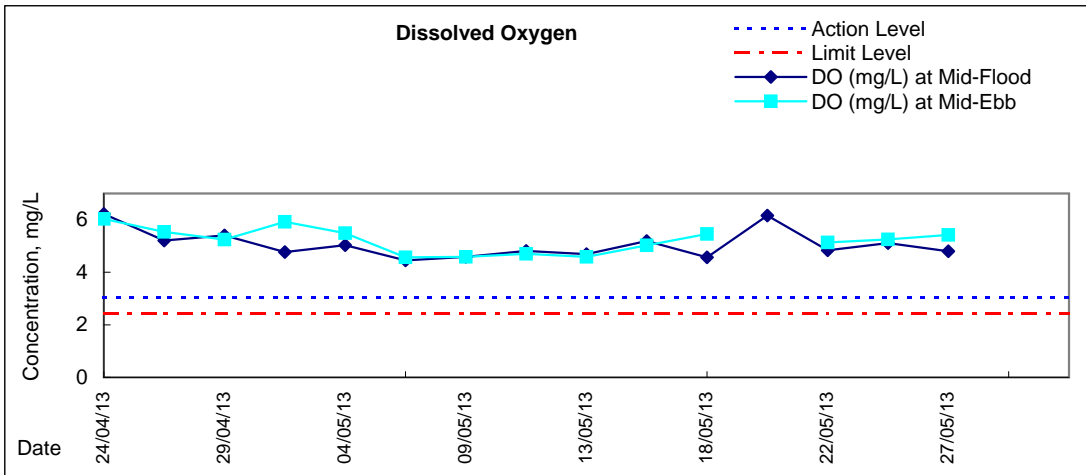
\*Due to the Amber rainstorm signal was hoisted on 20 May 13 at ebb tide, the water quality monitoring was cancelled.

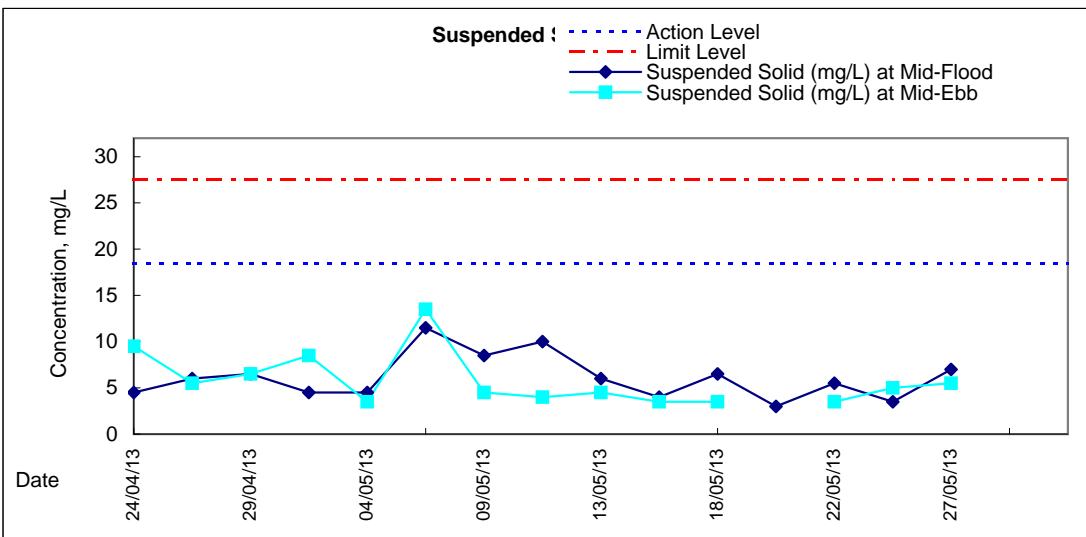
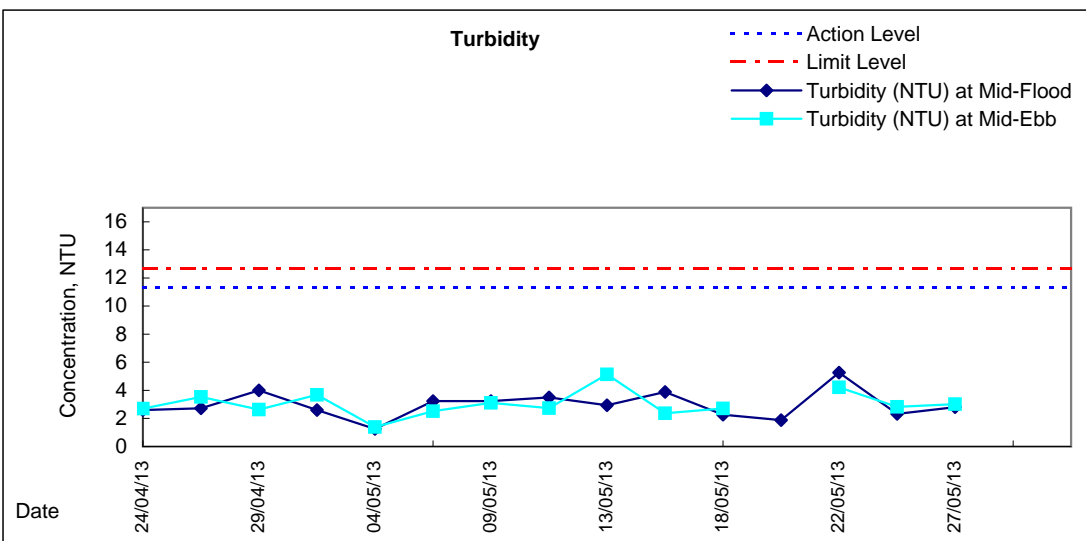
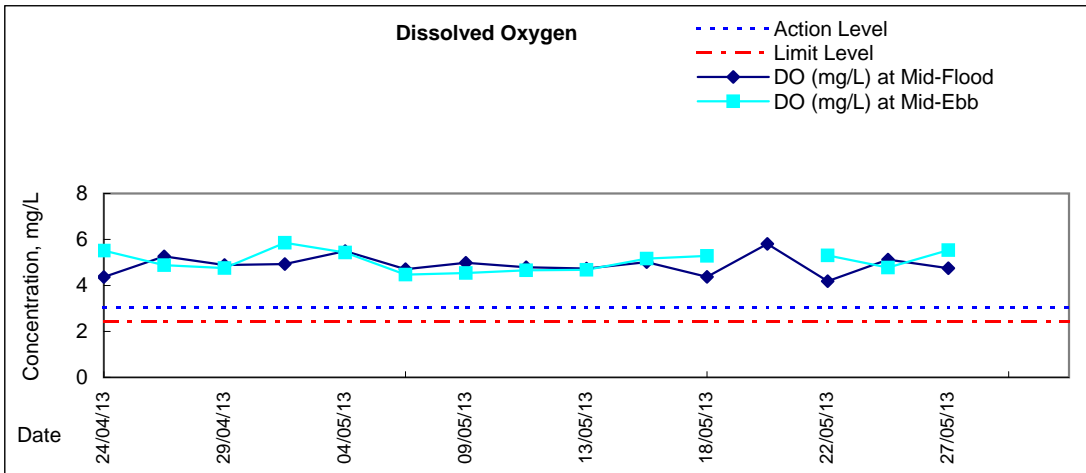






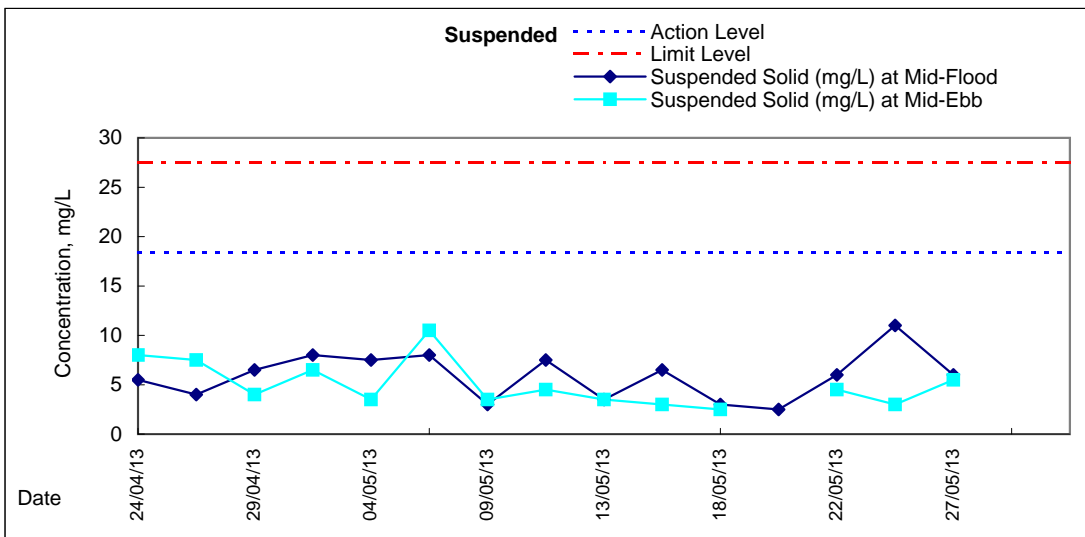
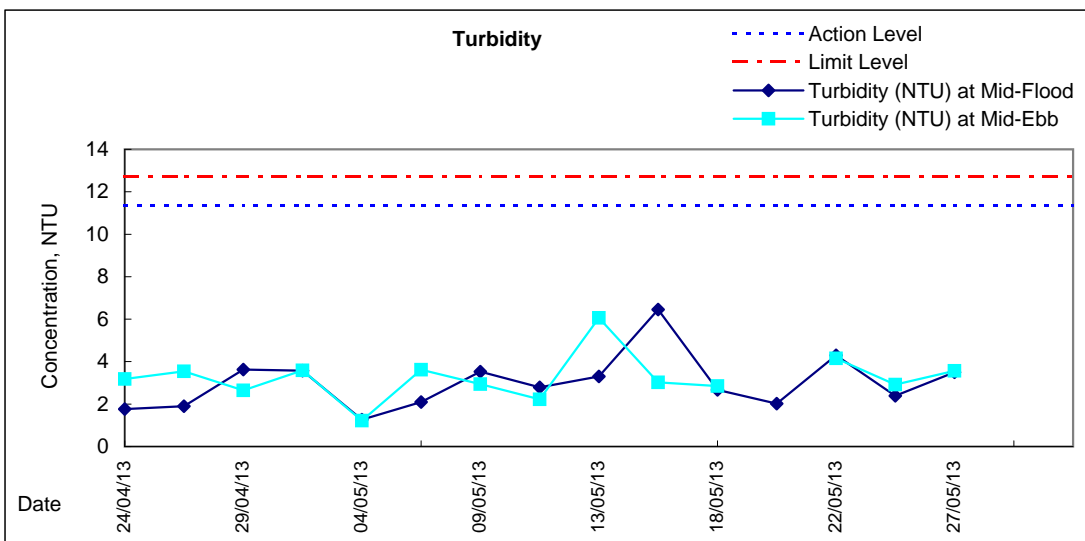
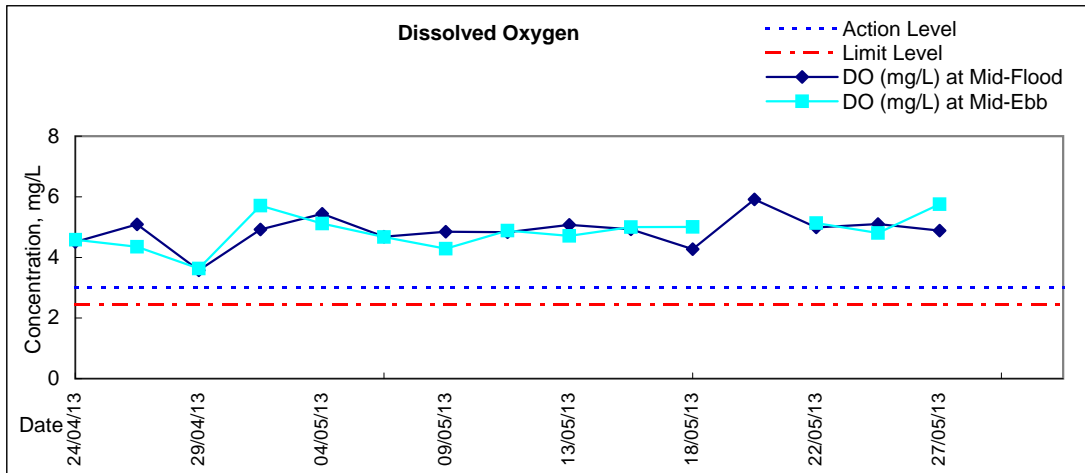
# Graphic Presentation of Water Quality Result of P1 - HKCEC Phase I

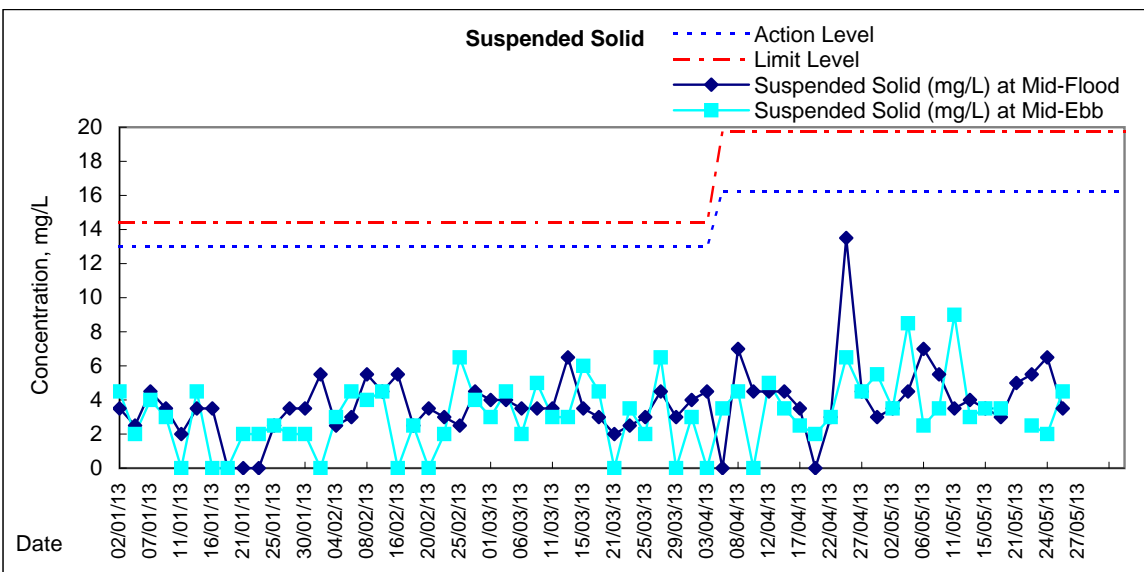
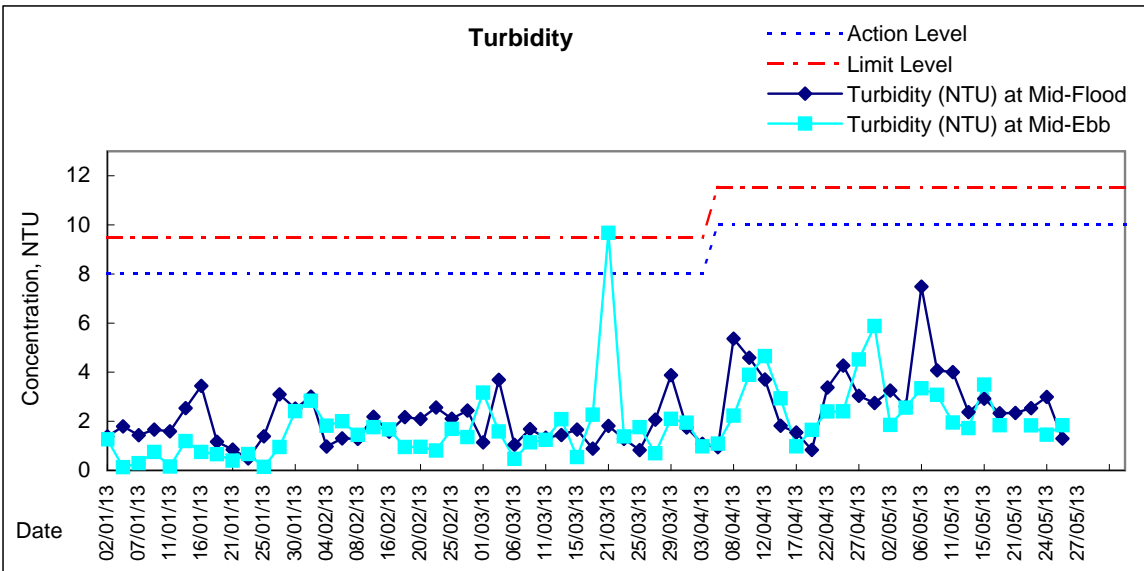
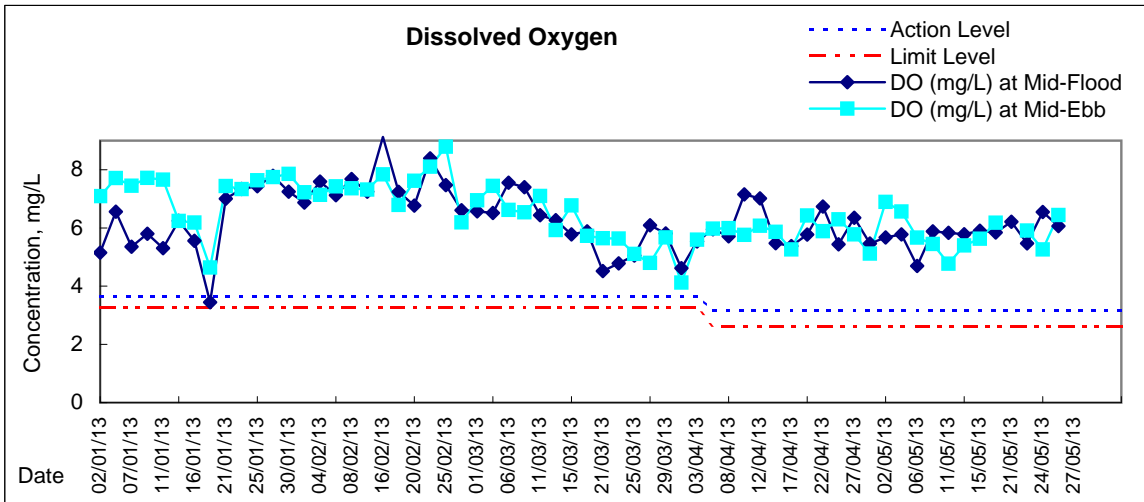






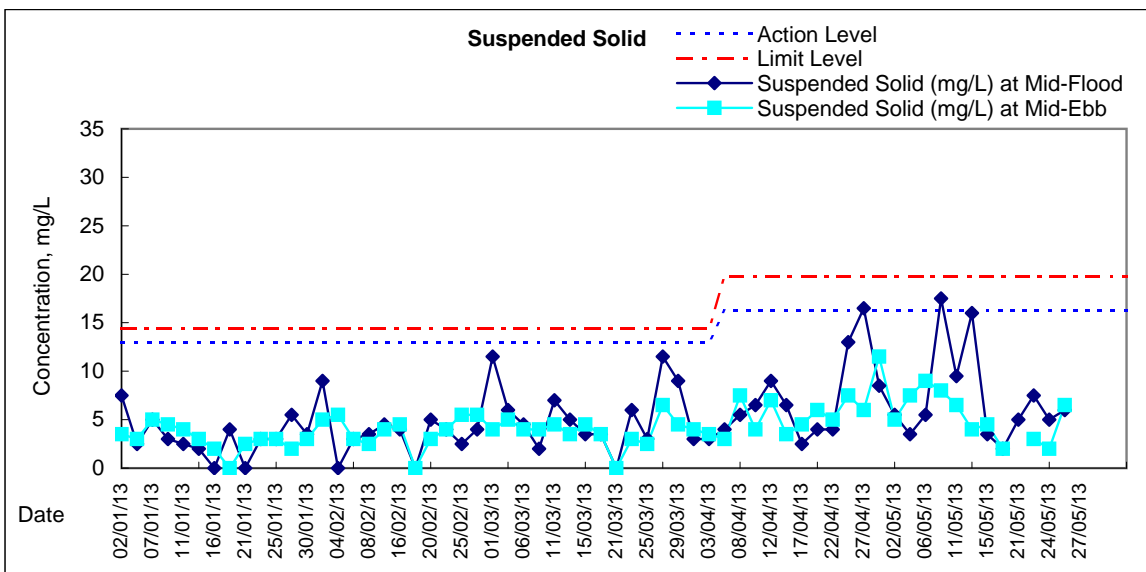
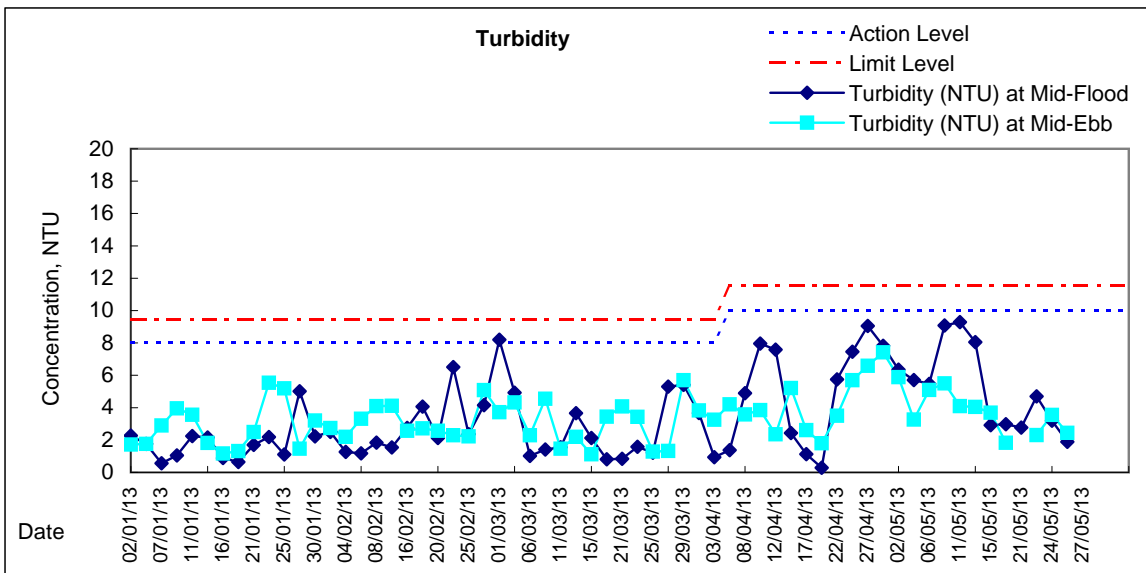
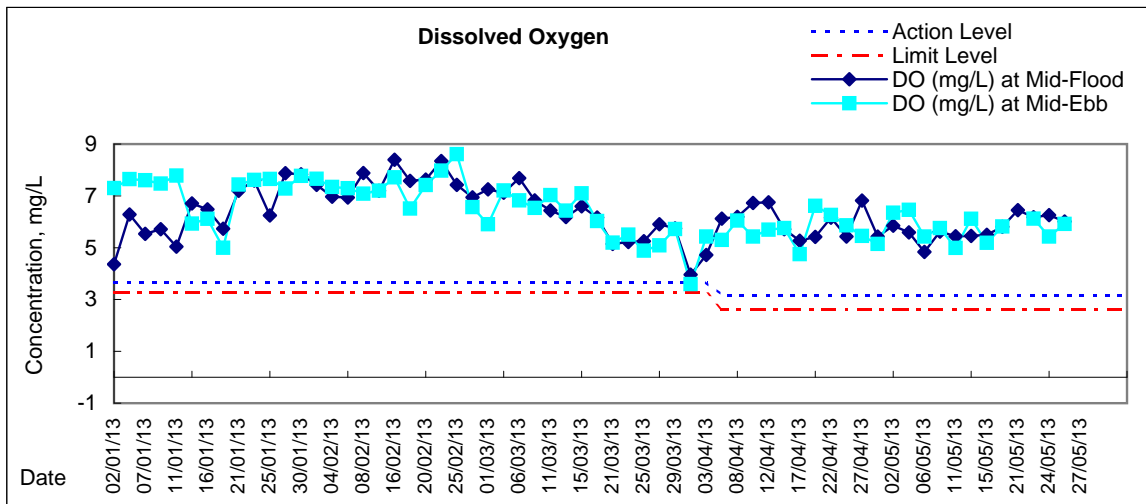
### Graphic Presentation of Water Quality Result of P5 - WCT / RT / IT

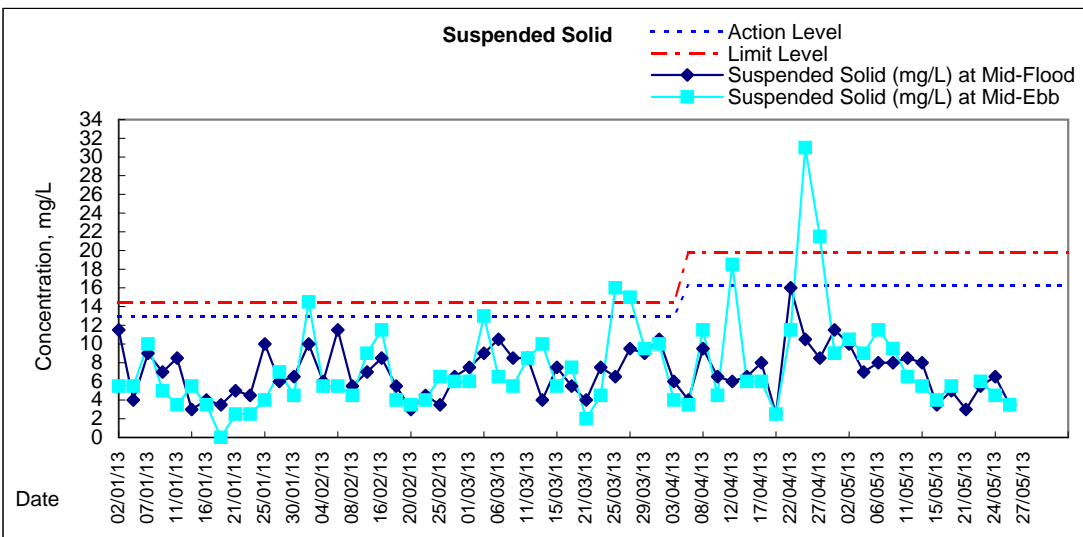
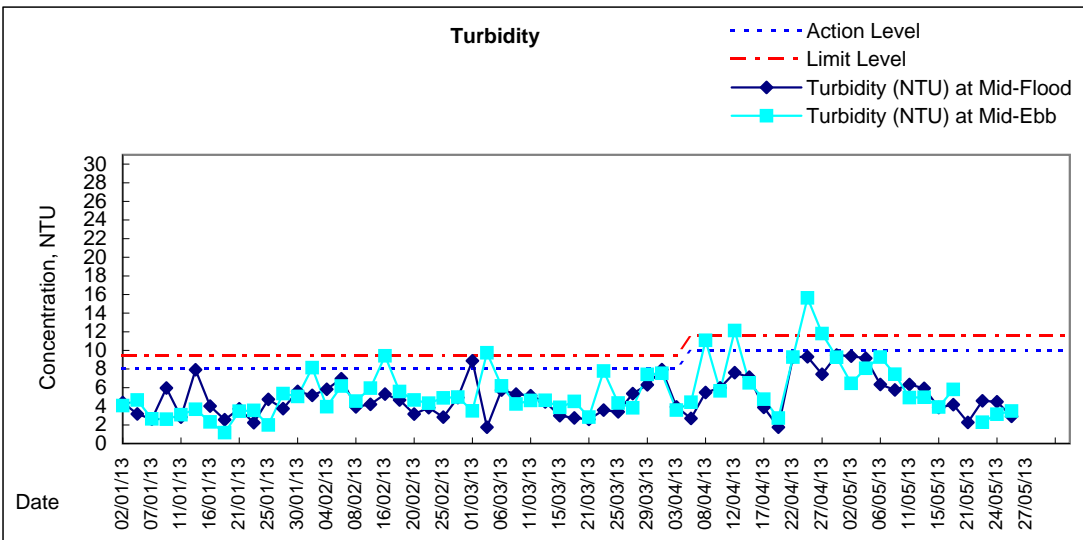
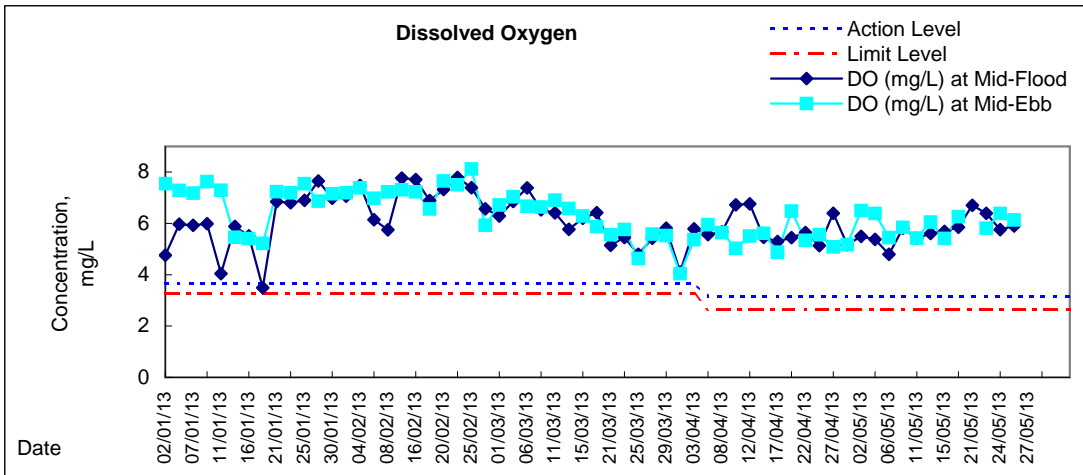




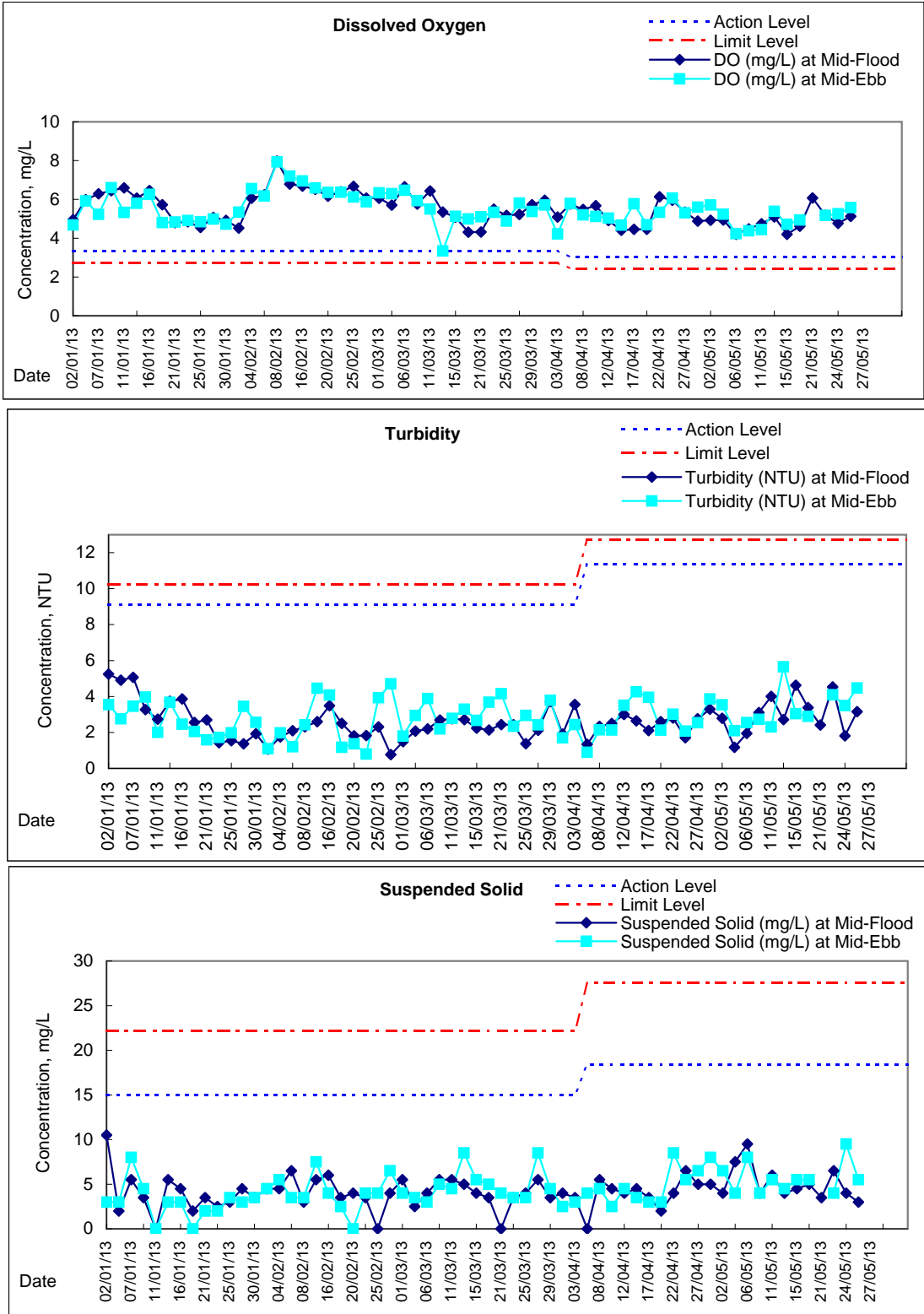


# Graphic Presentation of Water Quality Result of WSD17 - Quarry Bay



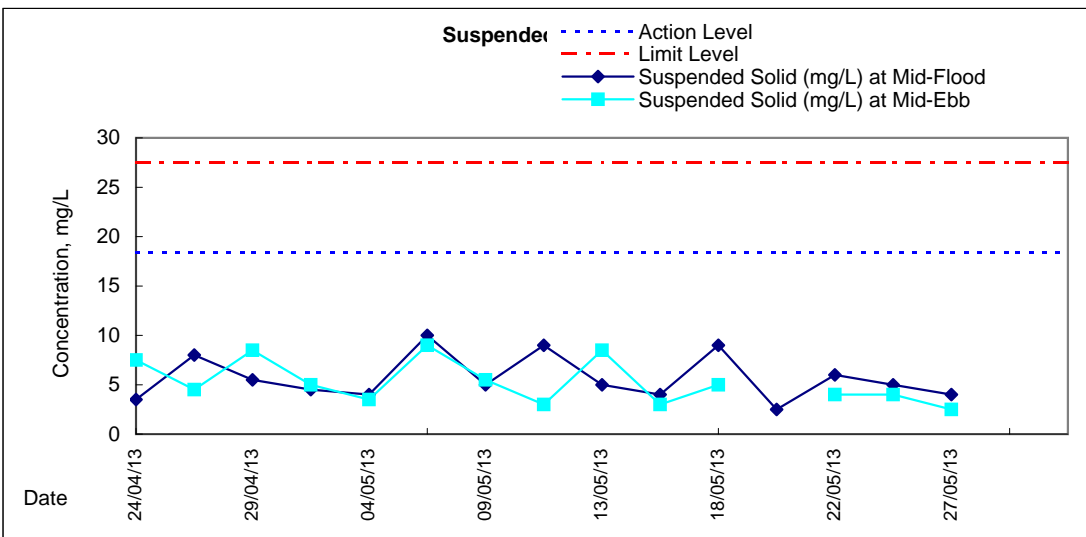
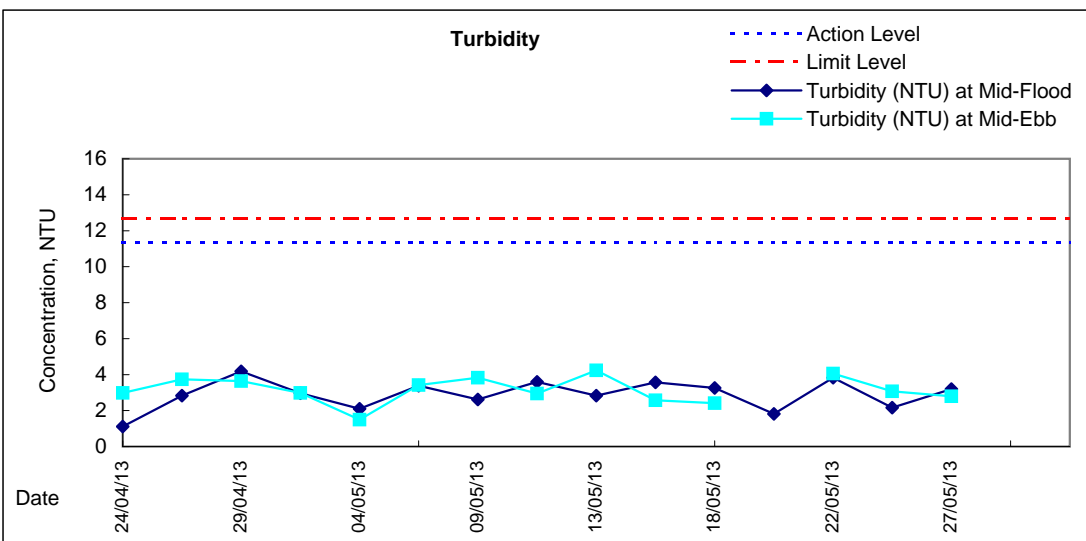
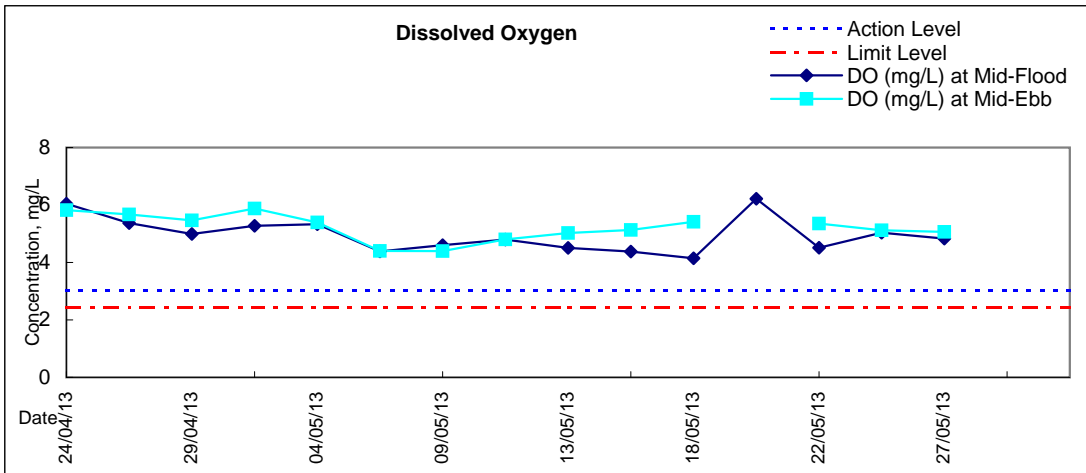


## Graphic Presentation of Water Quality Result of C1 - HKCEC



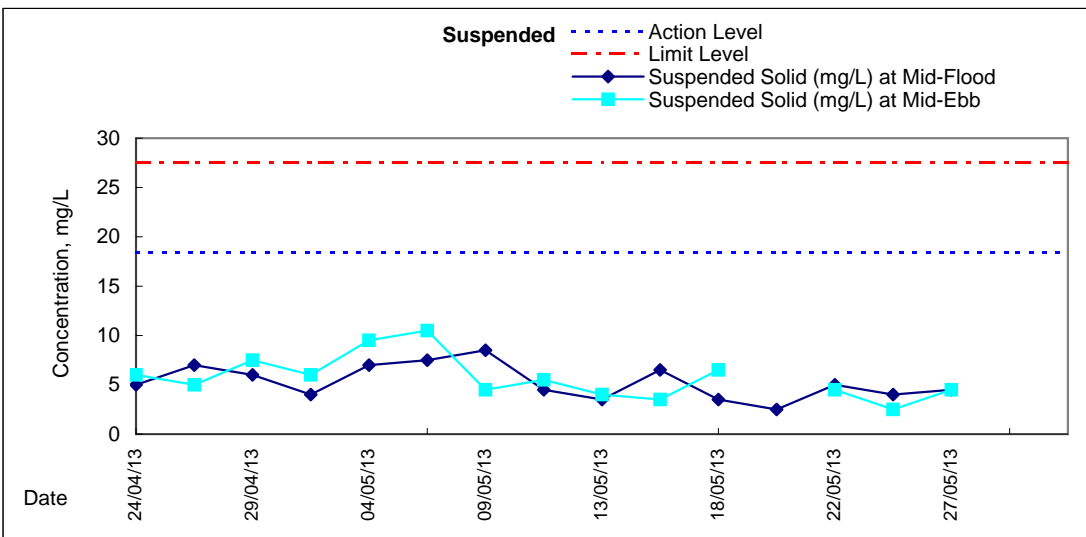
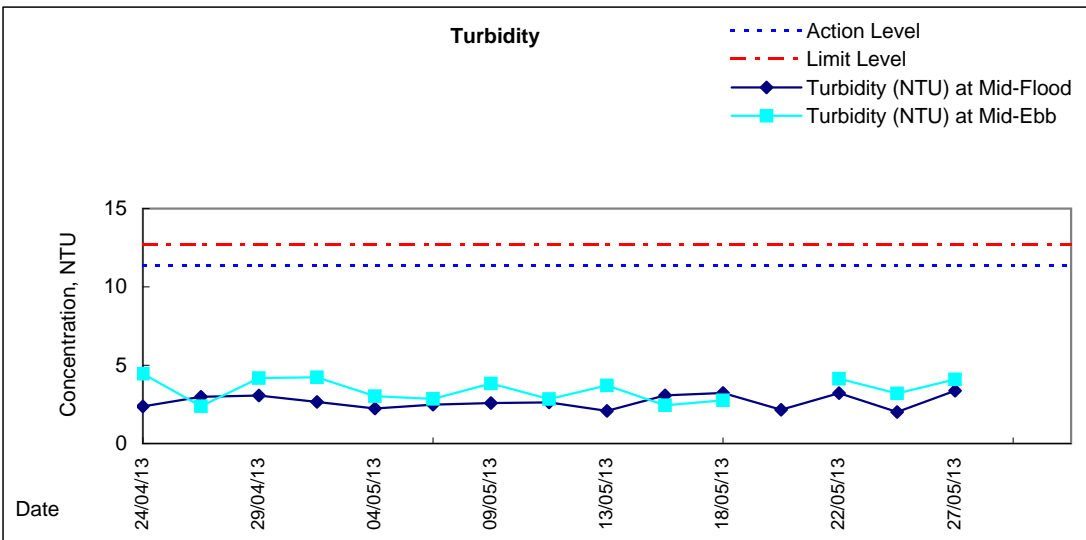
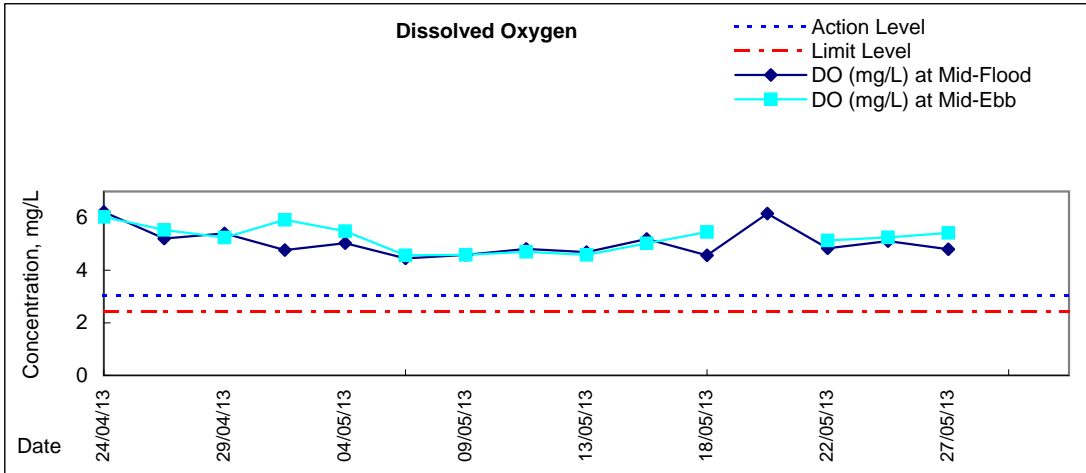
Remarks: Due to the blockage of road access to C1 on 15 Dec 2012 during mid-flood, the water quality monitoring was cancelled at C1 on 15 Dec 2012 during mid-flood.

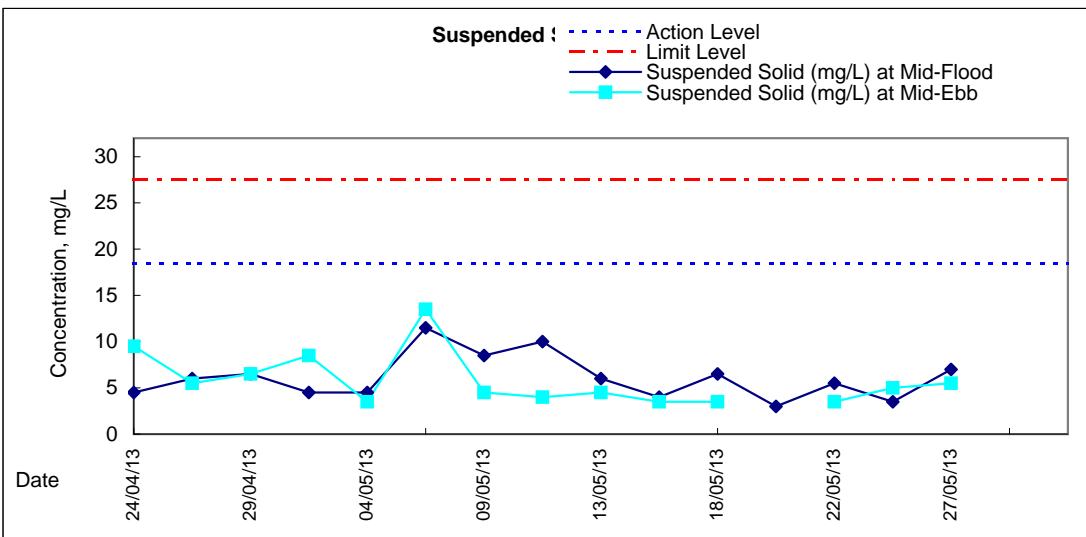
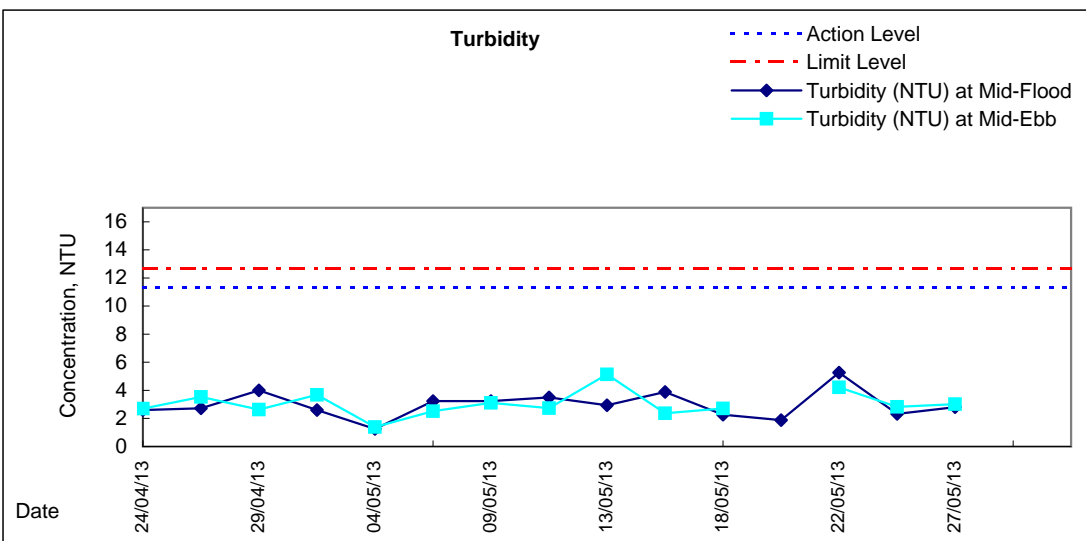
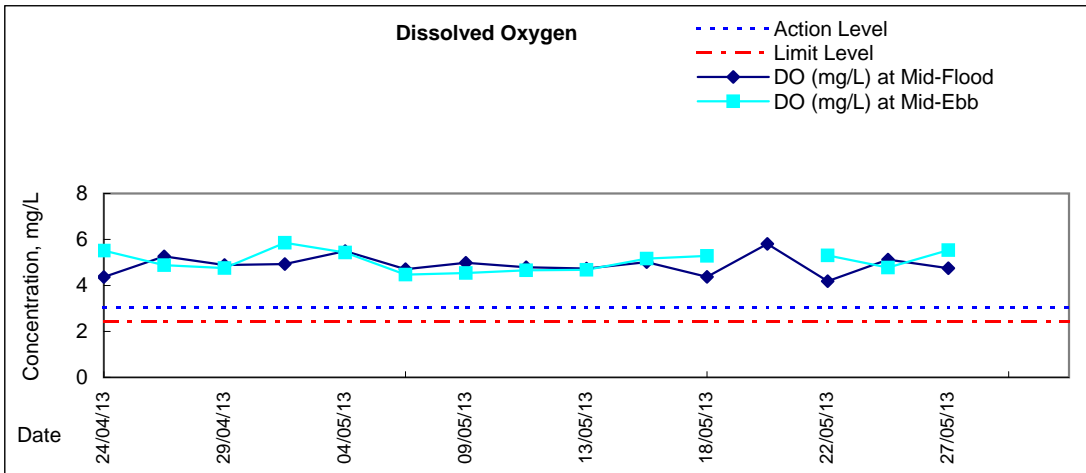






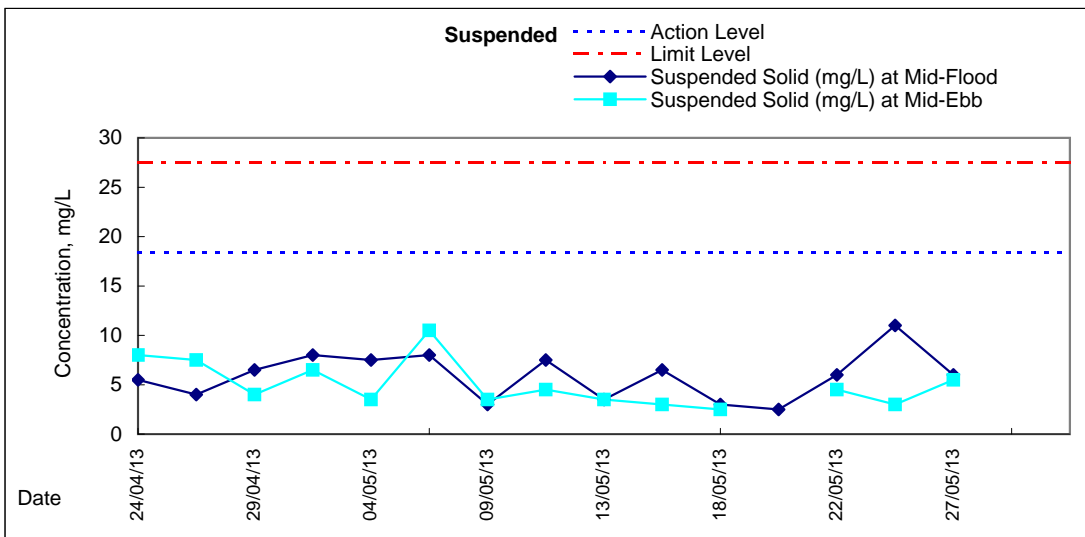
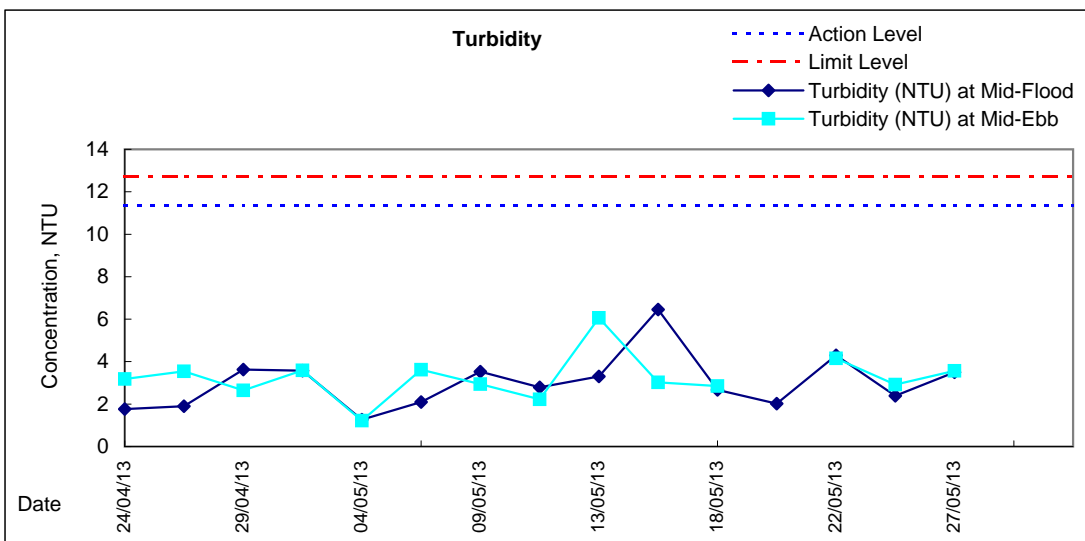
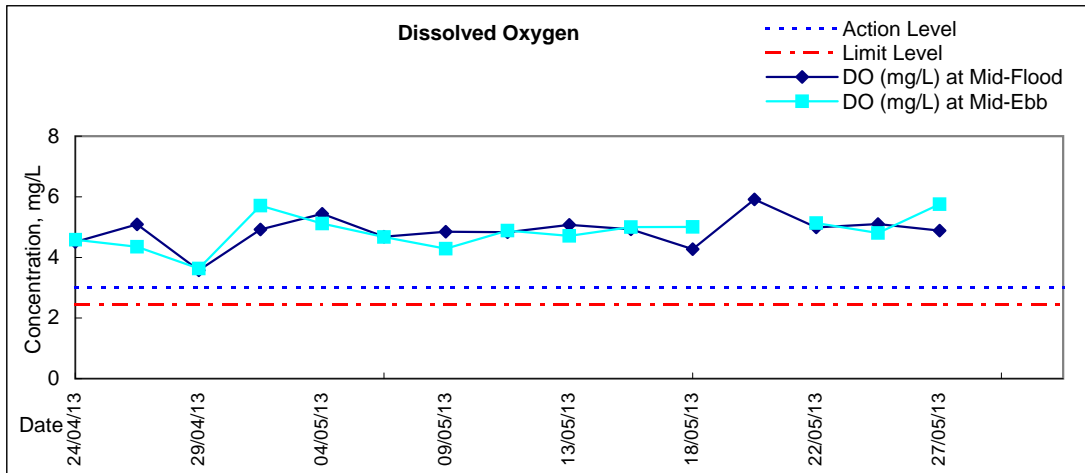
# Graphic Presentation of Water Quality Result of P1 - HKCEC Phase I





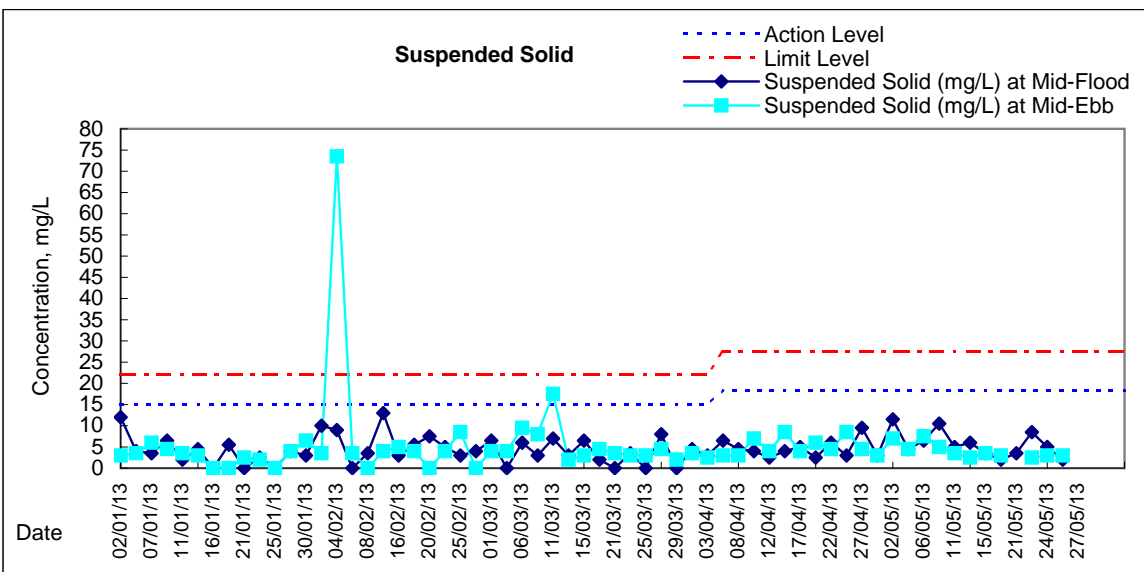
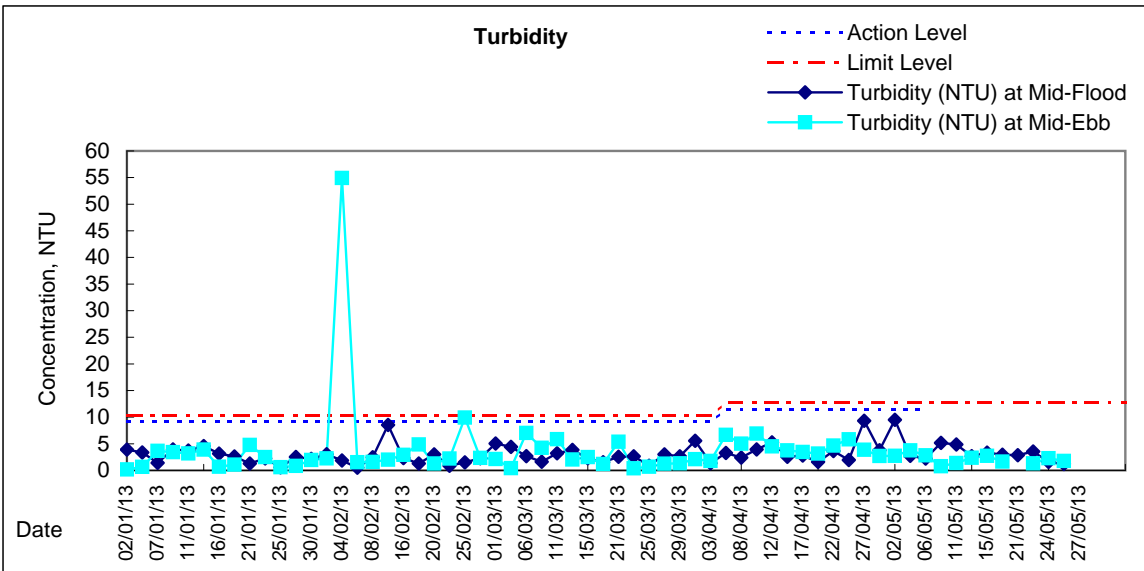
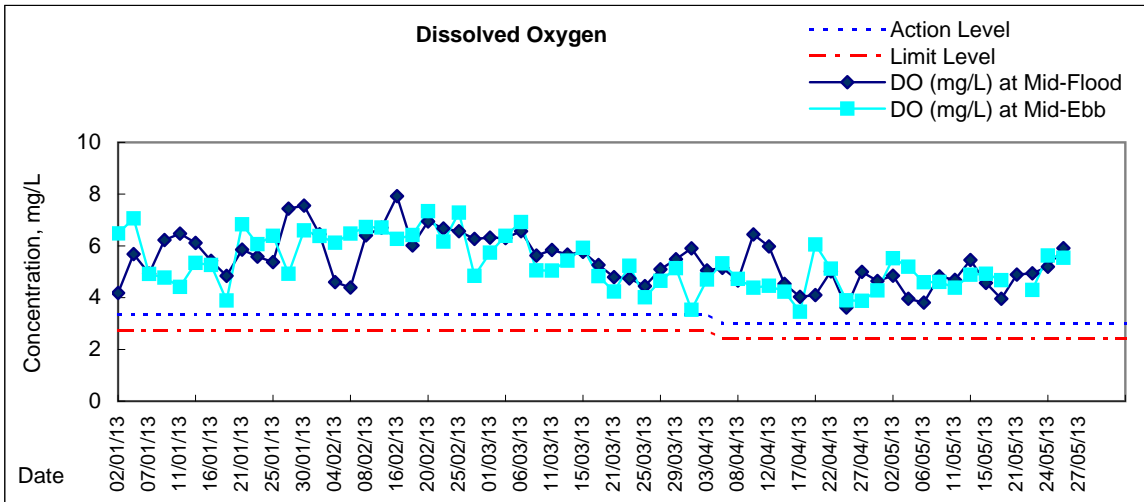


### Graphic Presentation of Water Quality Result of P5 - WCT / RT / IT



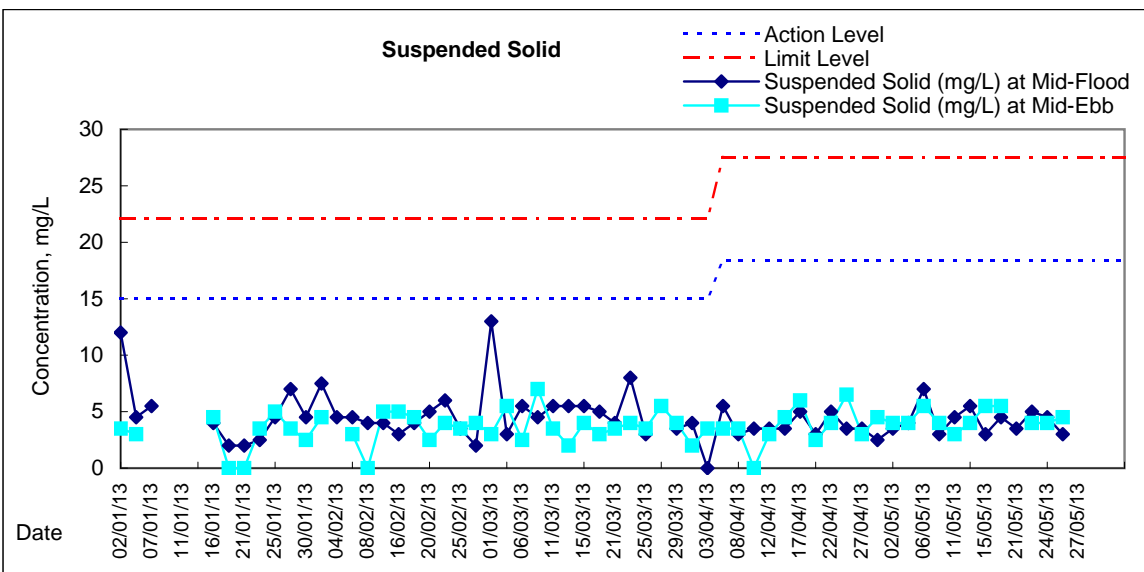
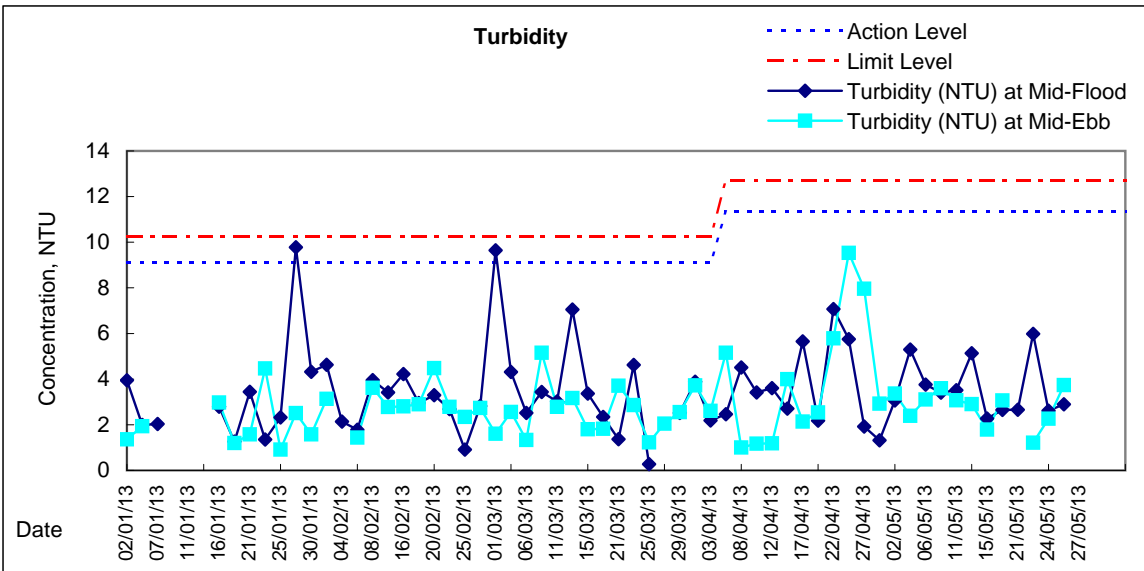
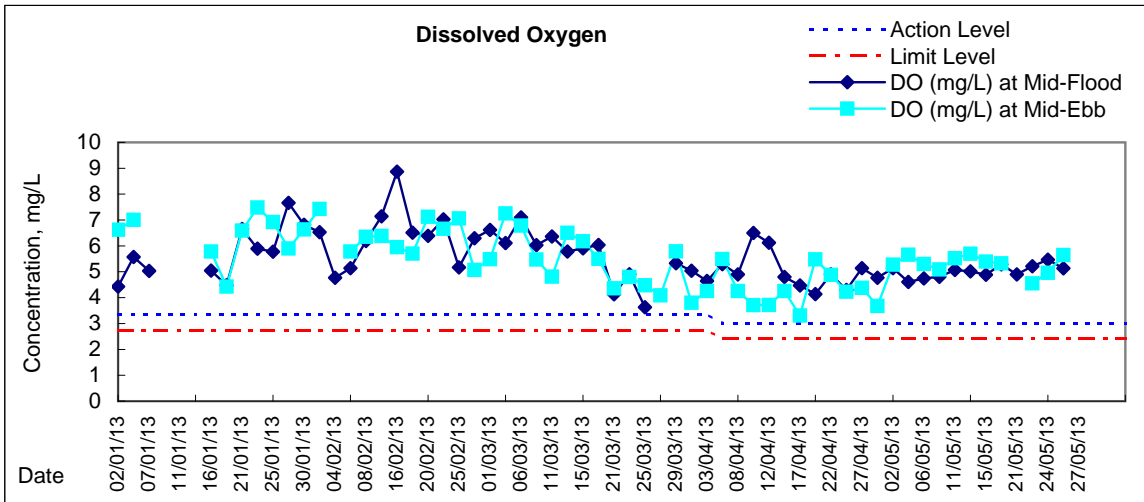


## Graphic Presentation of Water Quality Result of C5e - SHKC (Eastern)



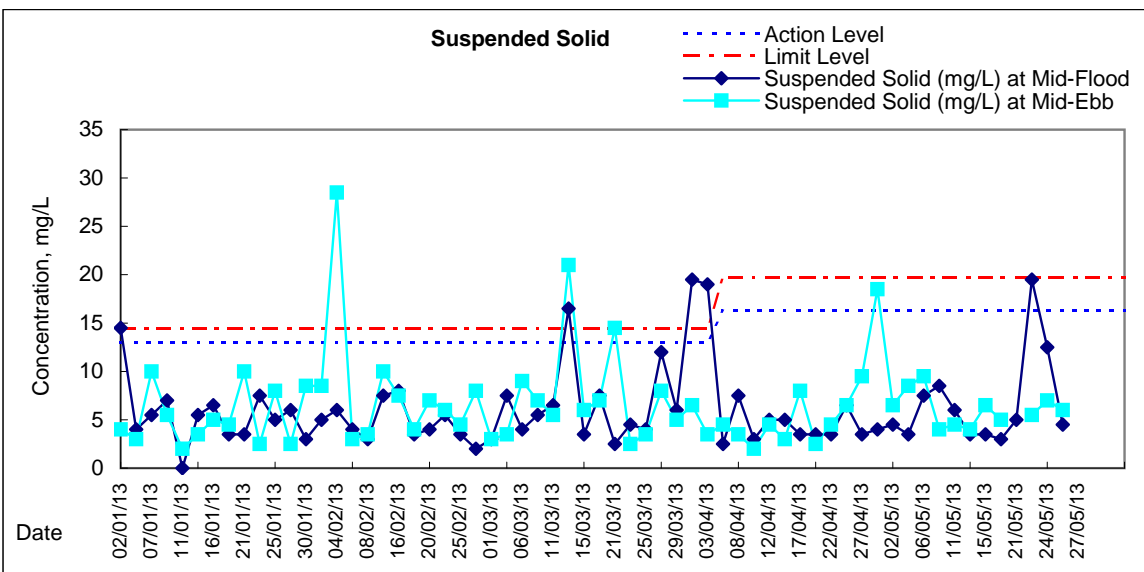
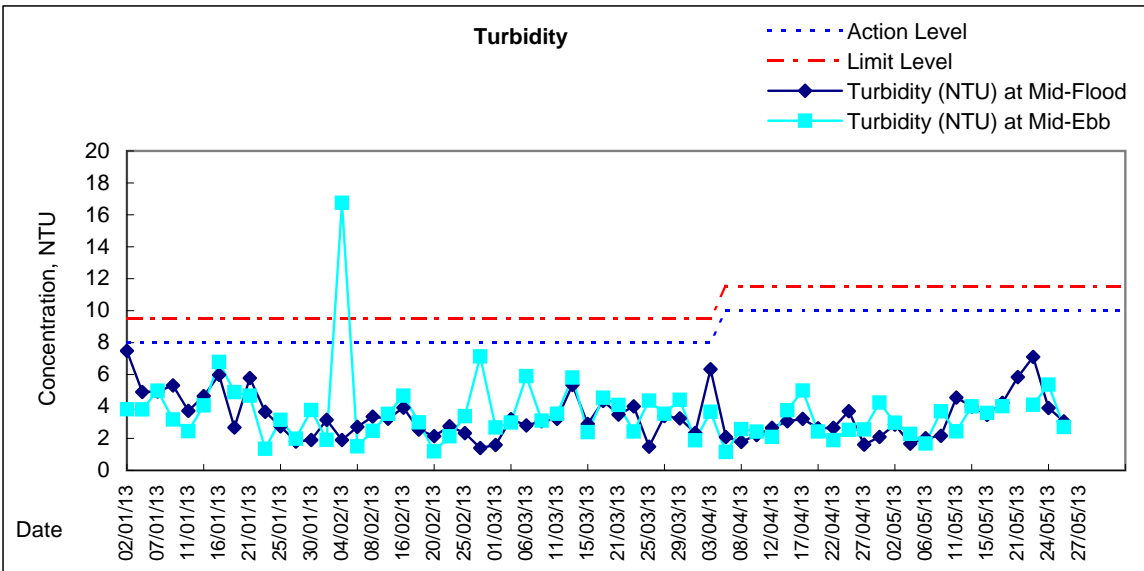
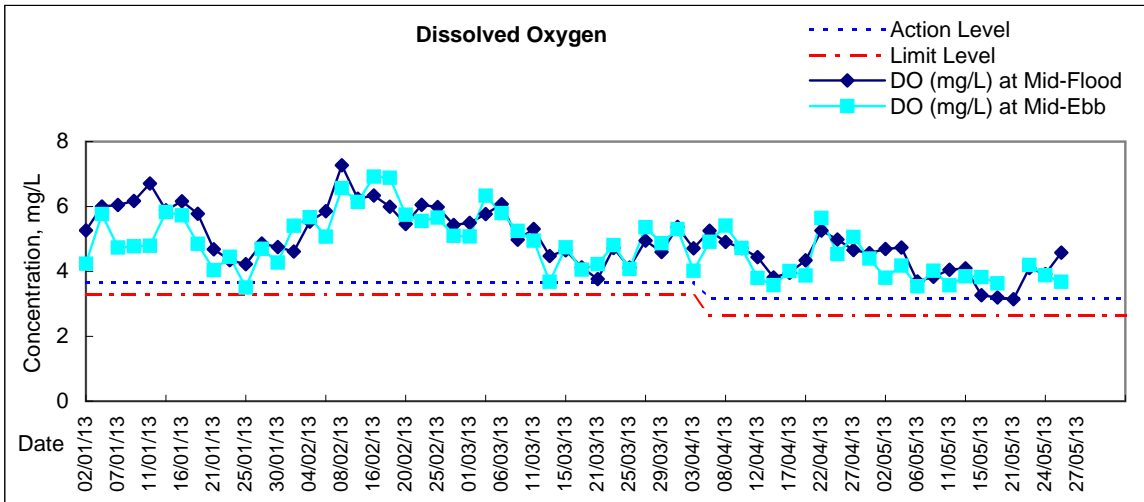


## Graphic Presentation of Water Quality Result of C5w - SHKC (Western)



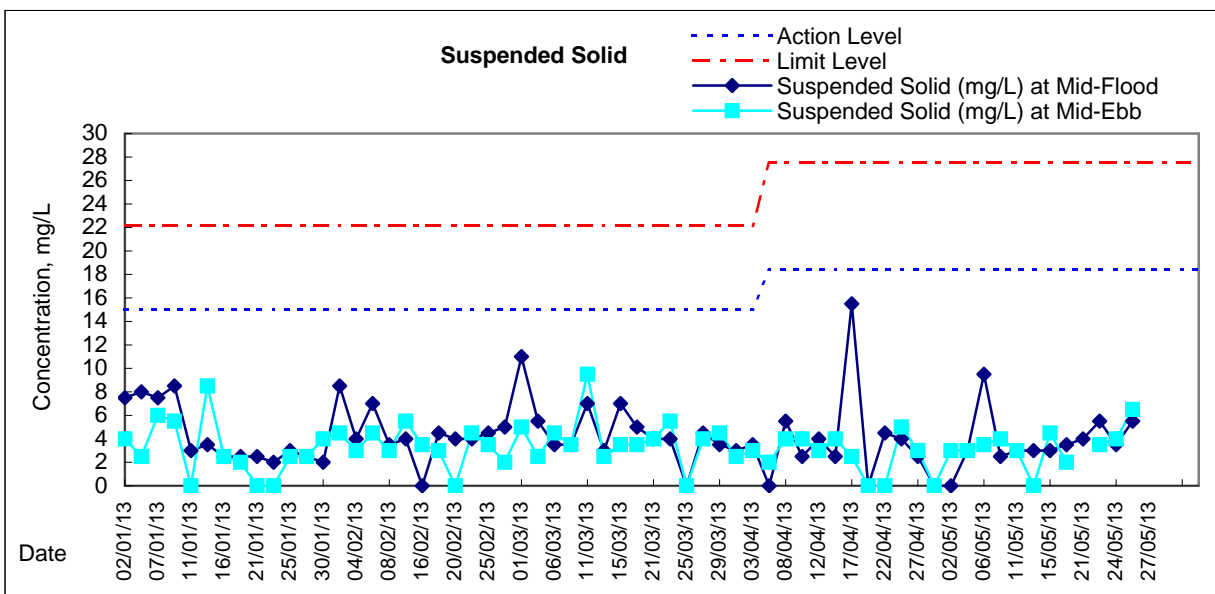
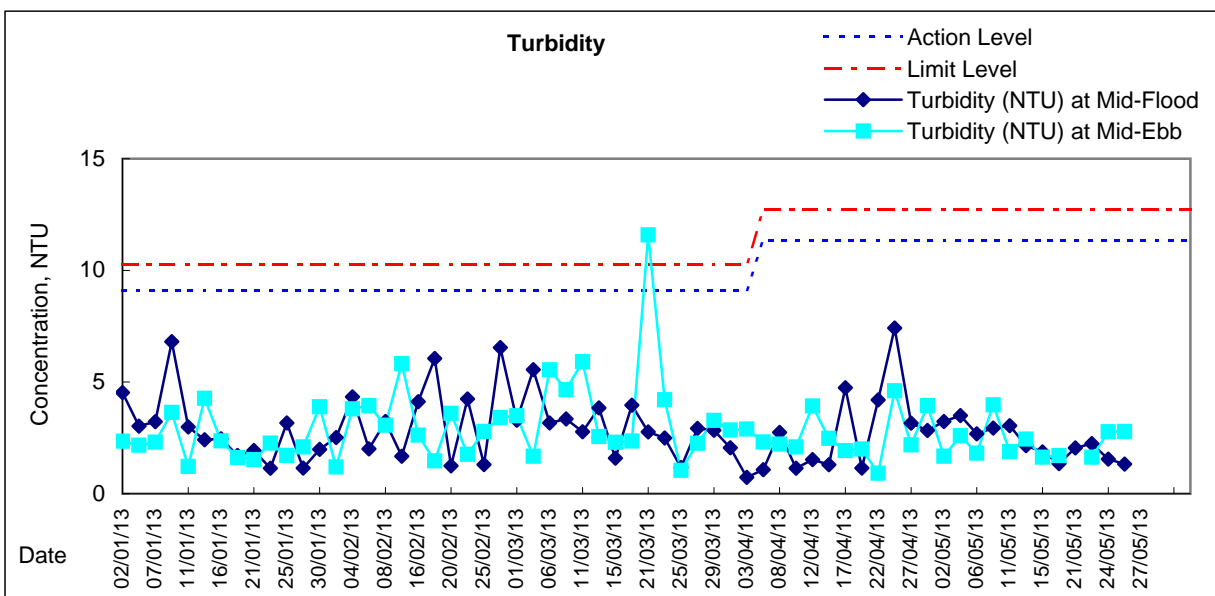
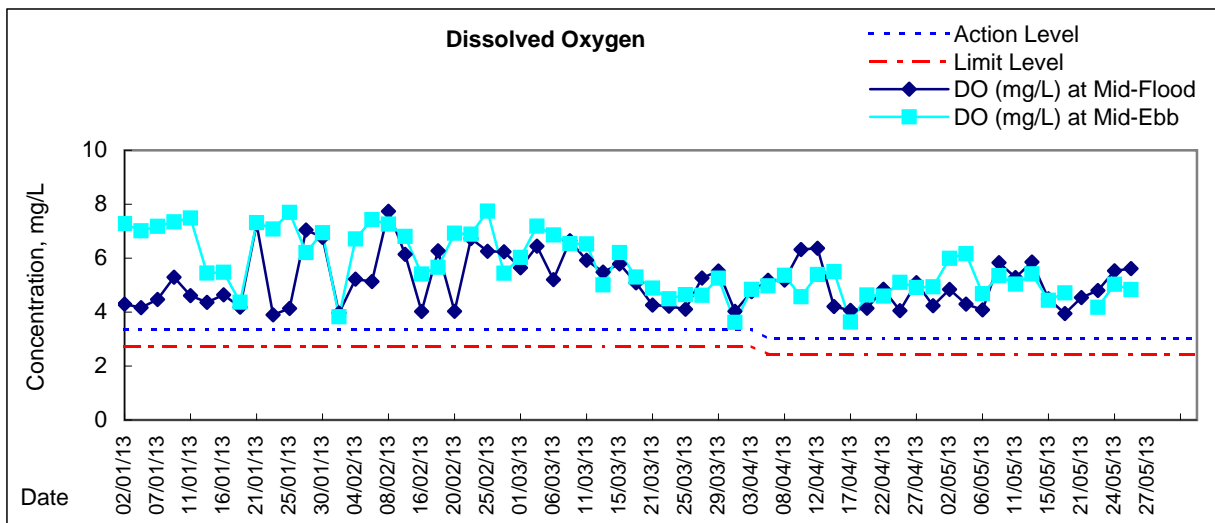


# Graphic Presentation of Water Quality Result of WSD21 - Wan Chai





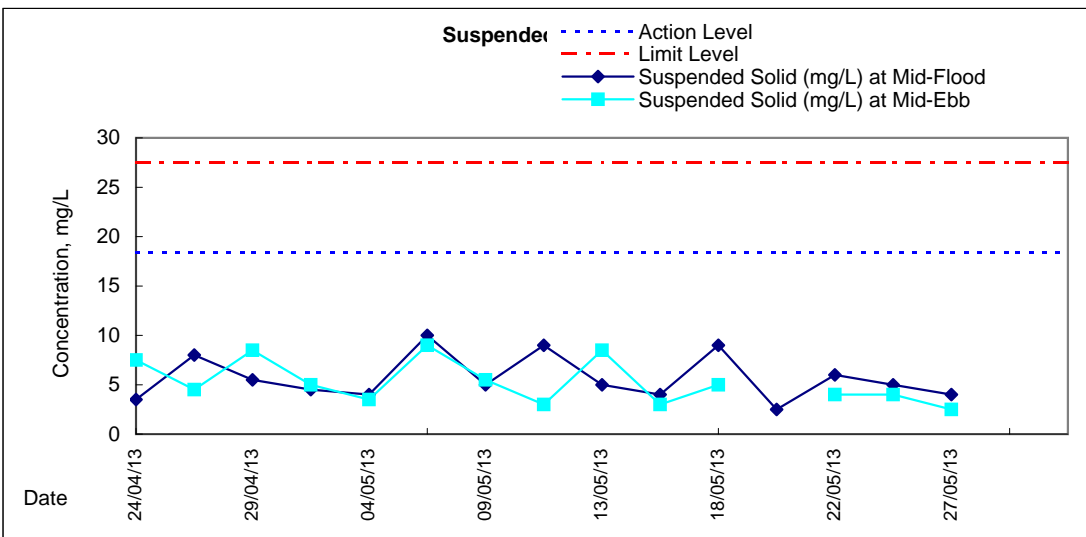
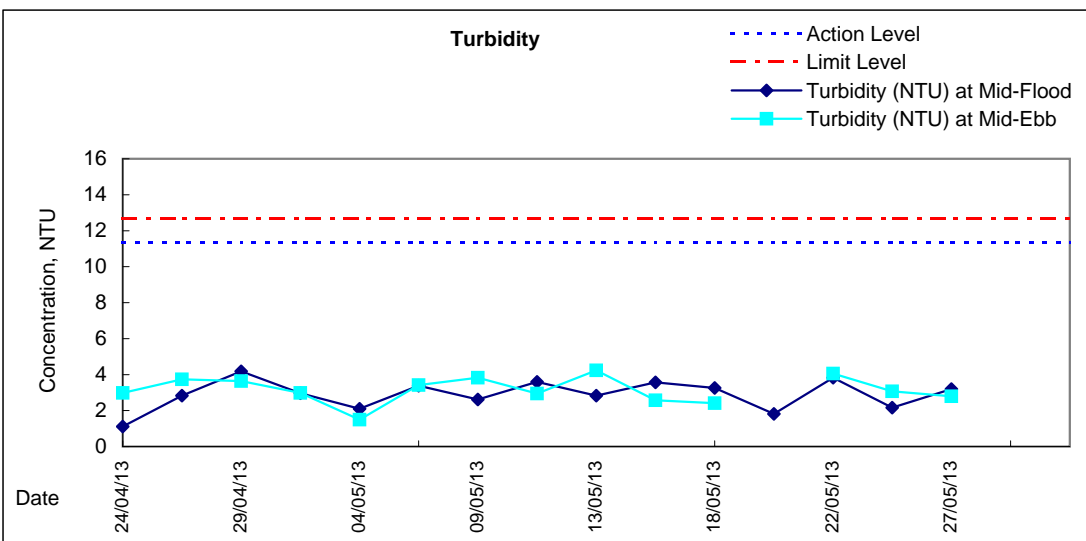
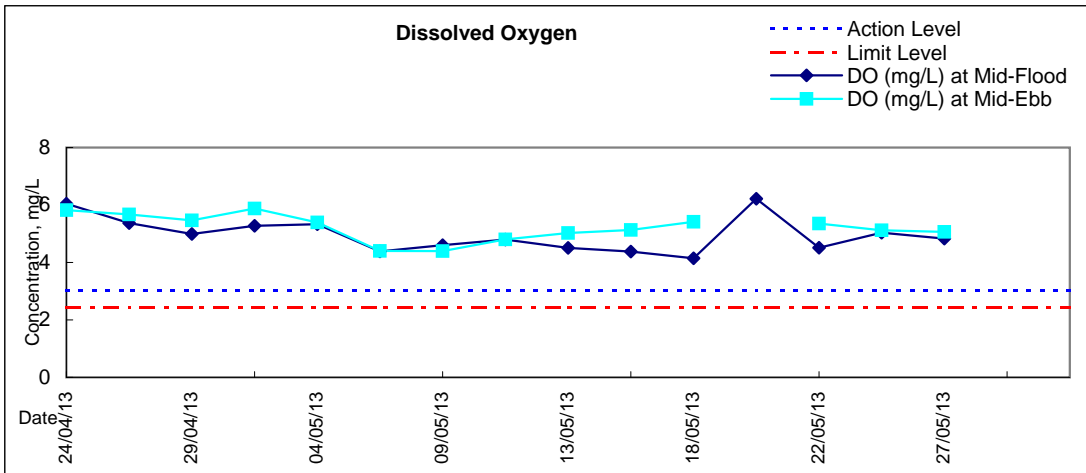
## Graphic Presentation of Water Quality Result of C7 - Windsor House



Remarks:

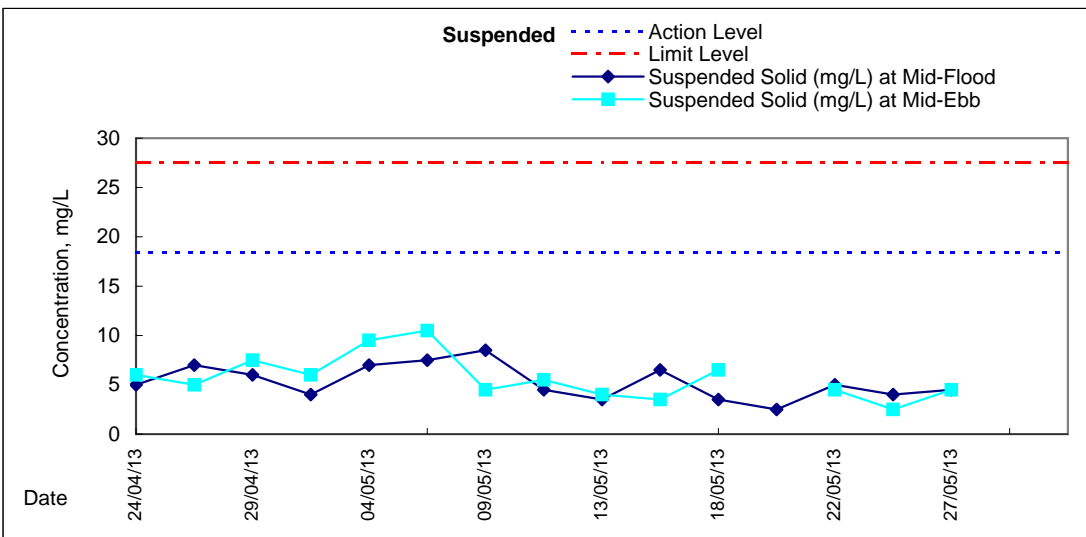
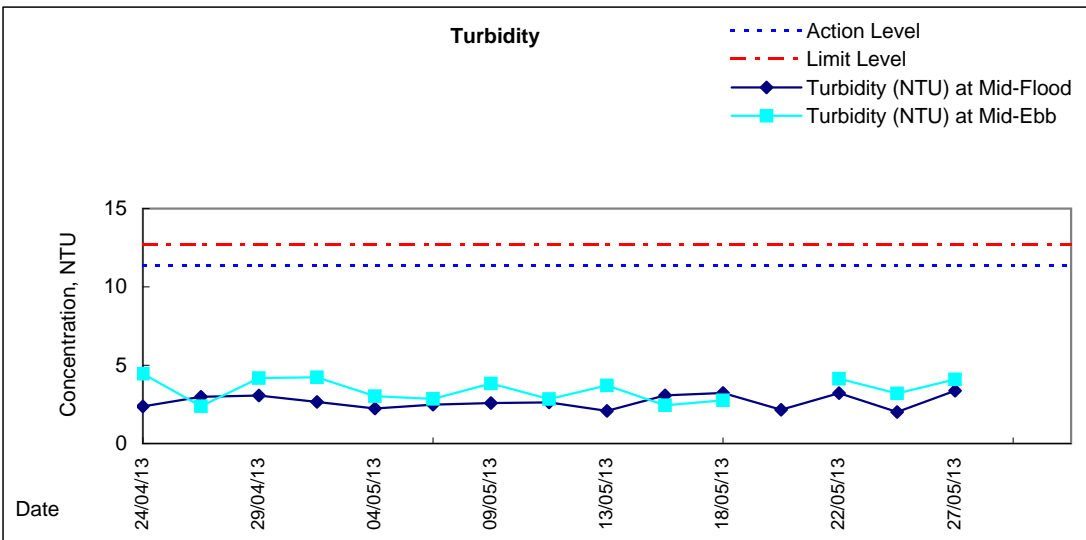
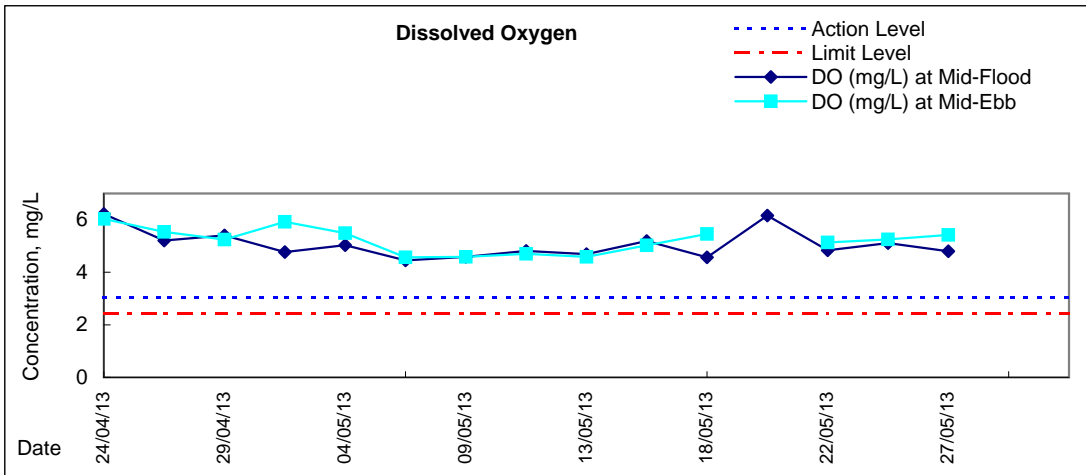
\*Due to the Amber rainstorm signal was hoisted on 20 May 13 at ebb tide, the water quality monitoring was cancelled.

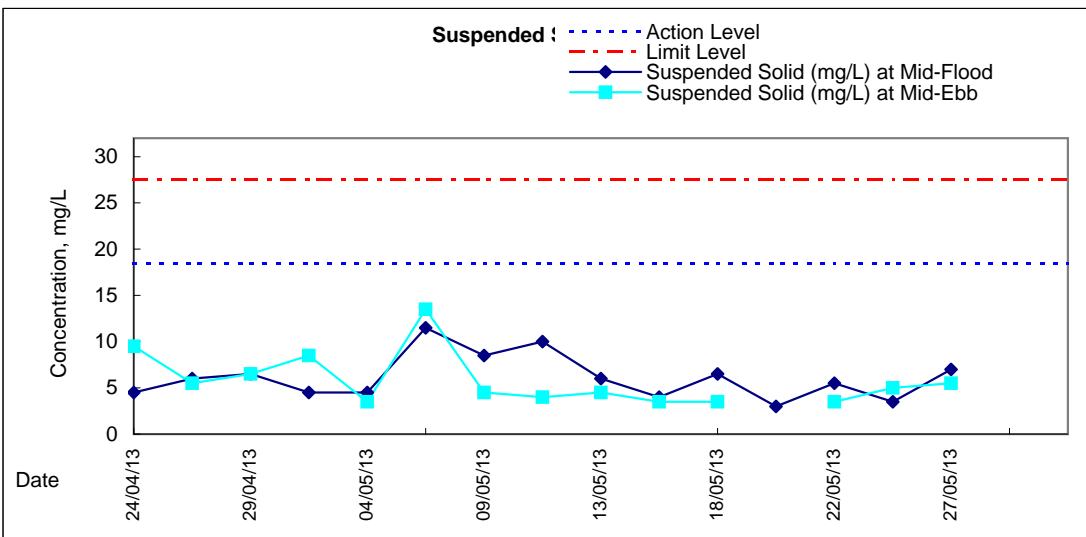
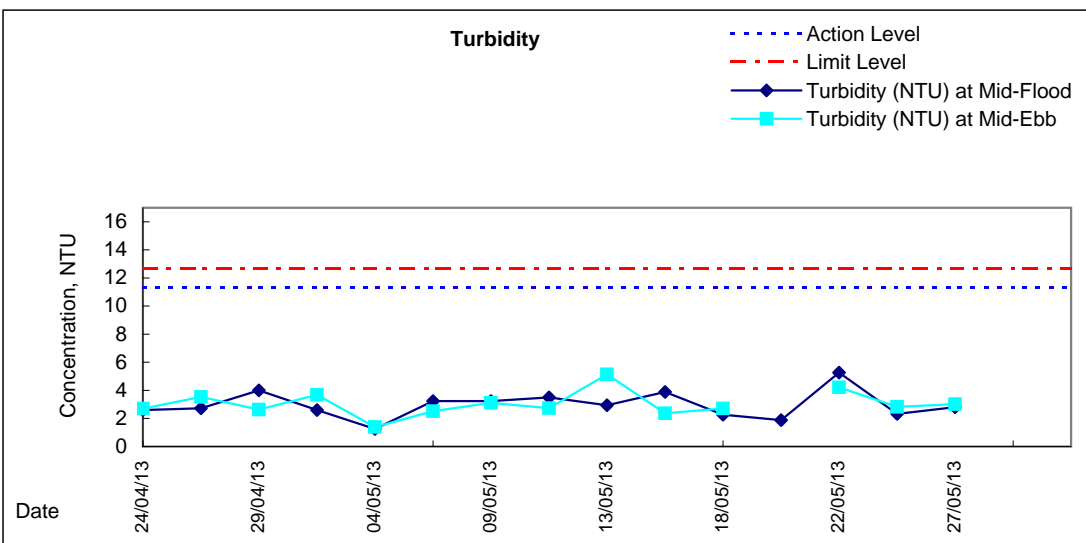
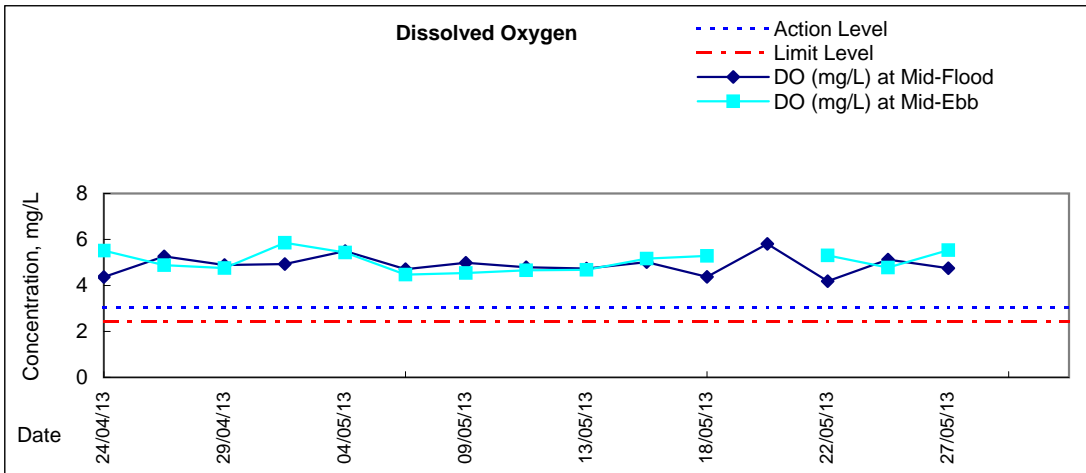






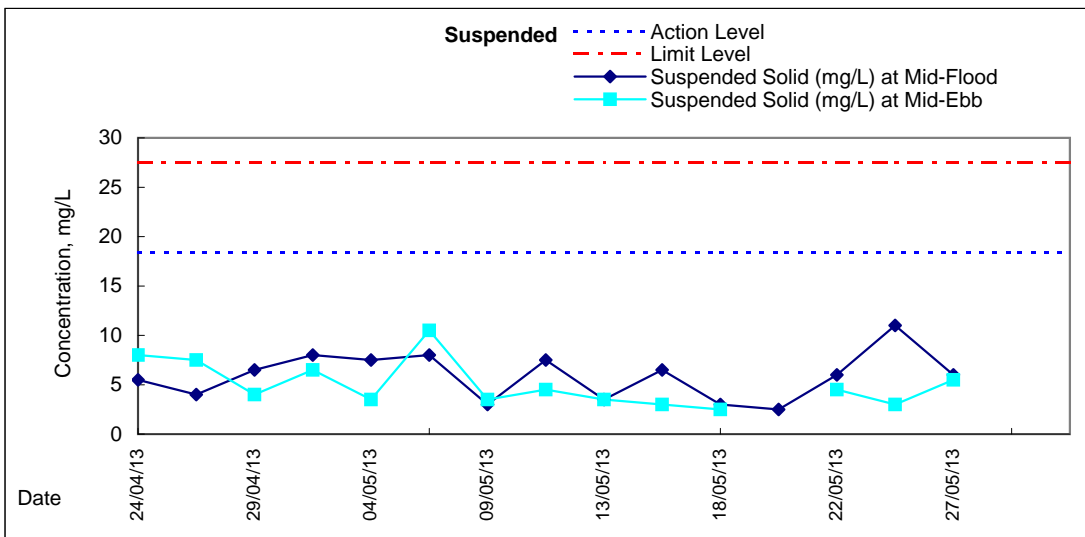
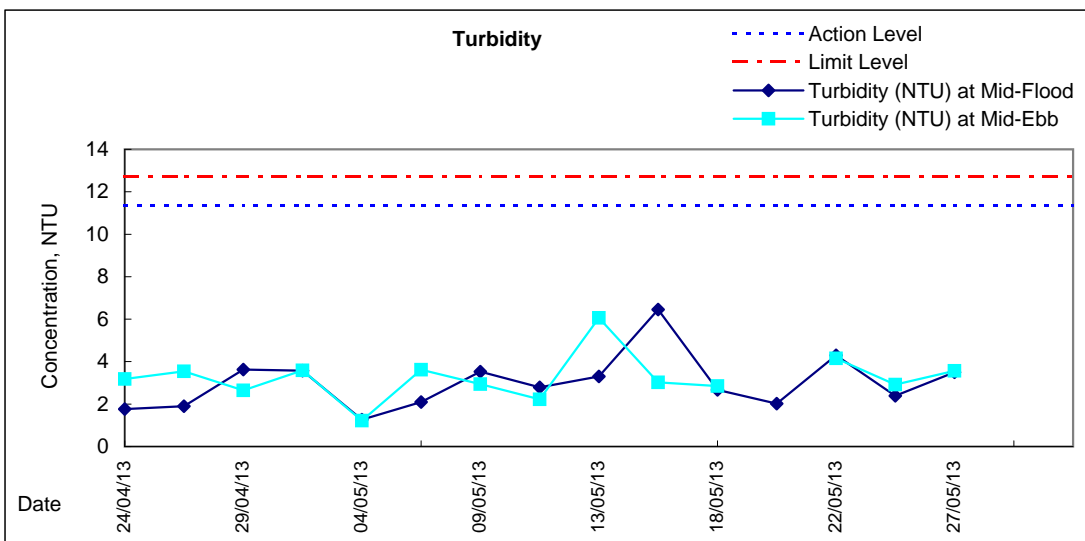
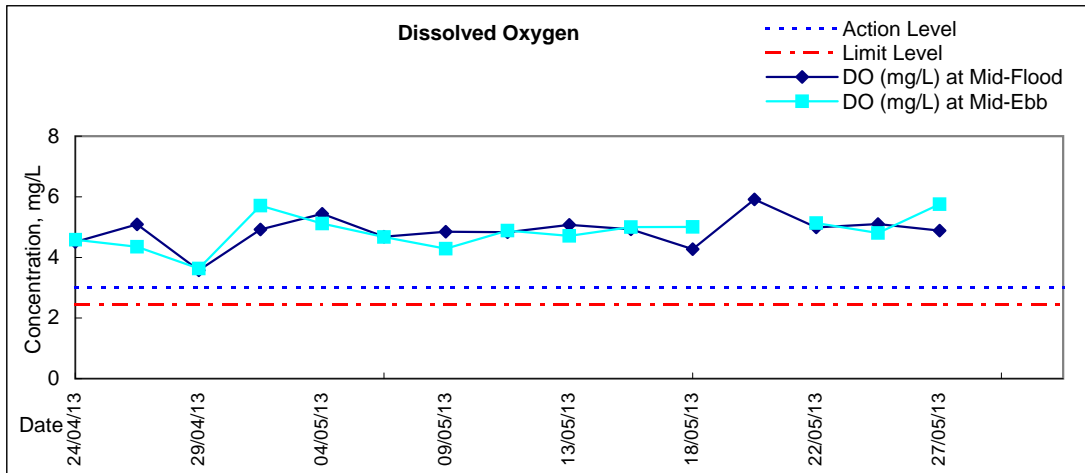
# Graphic Presentation of Water Quality Result of P1 - HKCEC Phase I





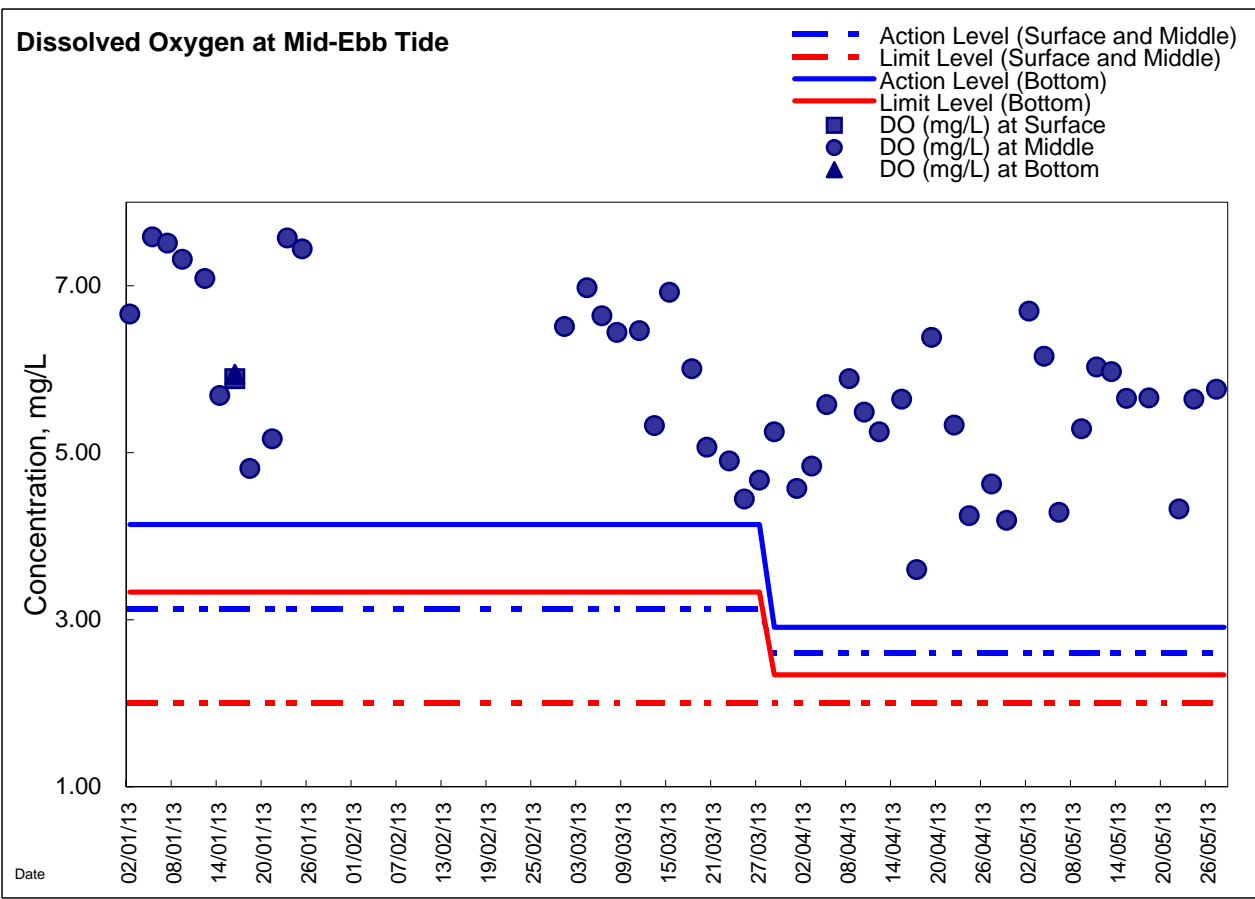
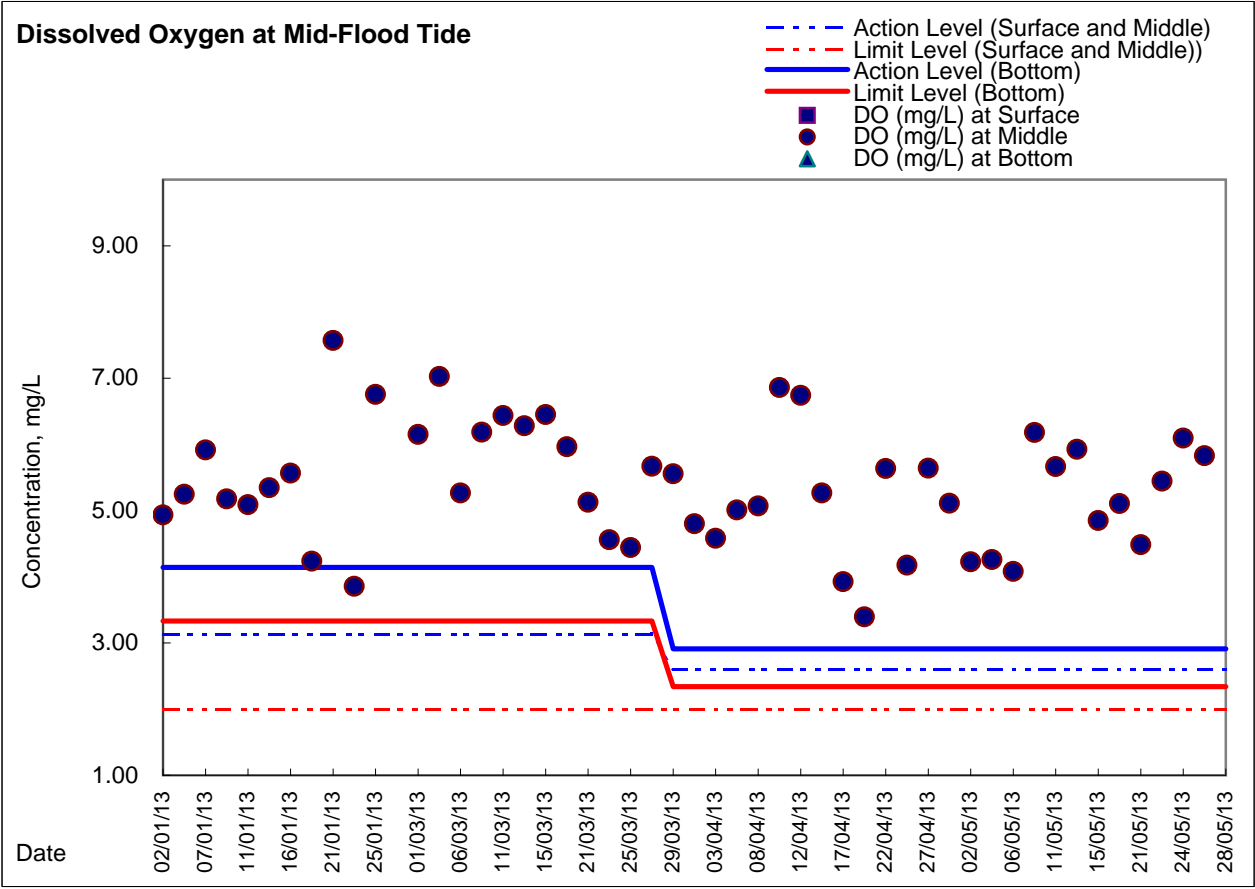


### Graphic Presentation of Water Quality Result of P5 - WCT / RT / IT



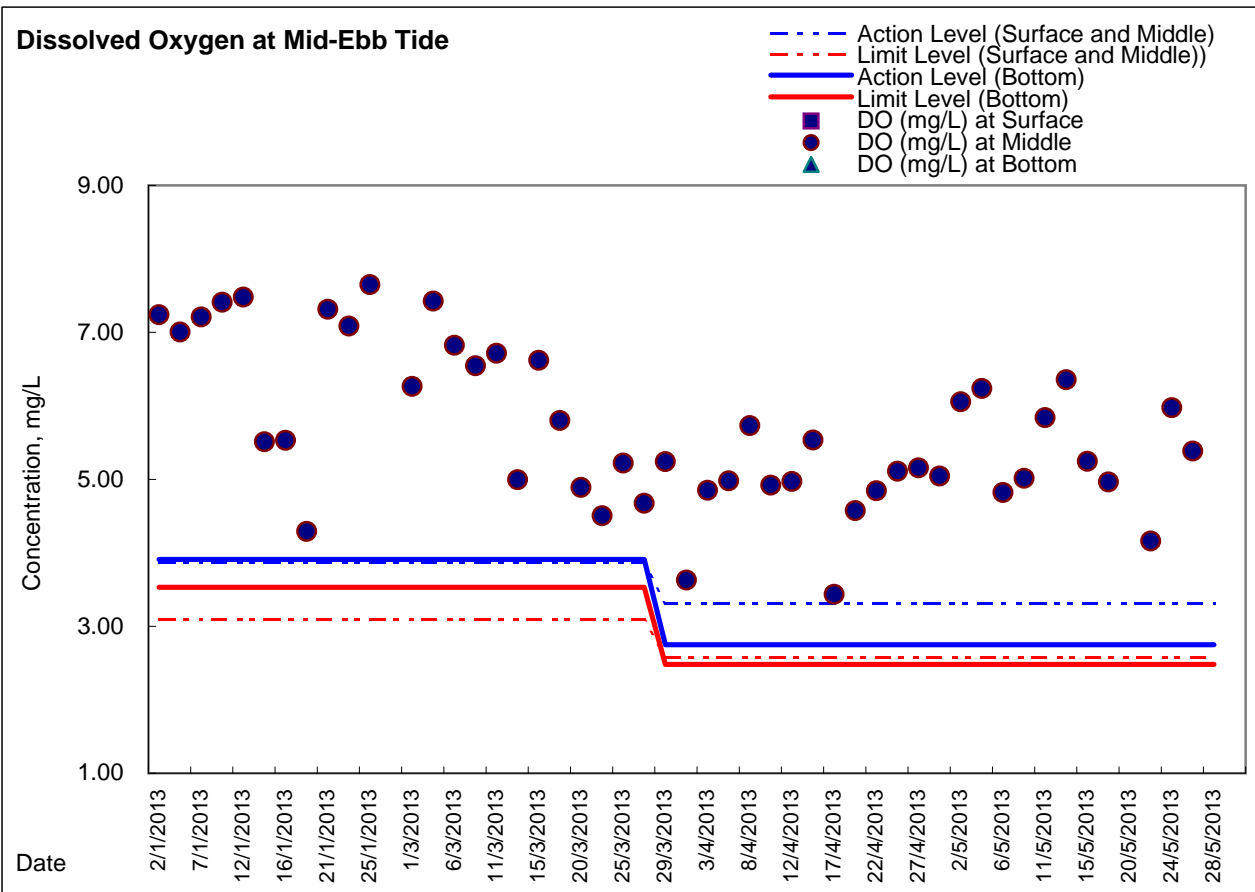
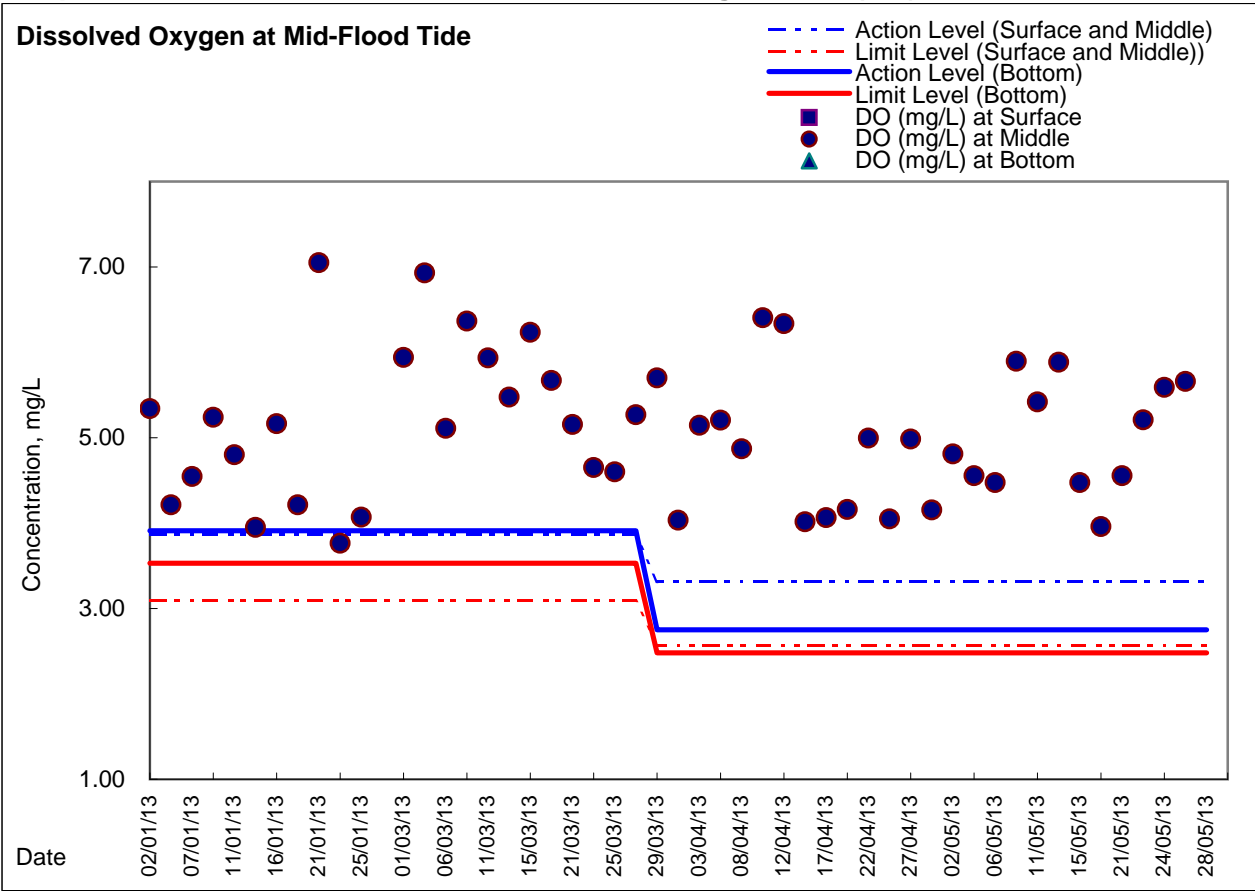


### Graphic Presentation of Enhanced Water Monitoring Results (DO) at C6 - Excelsior Hotel

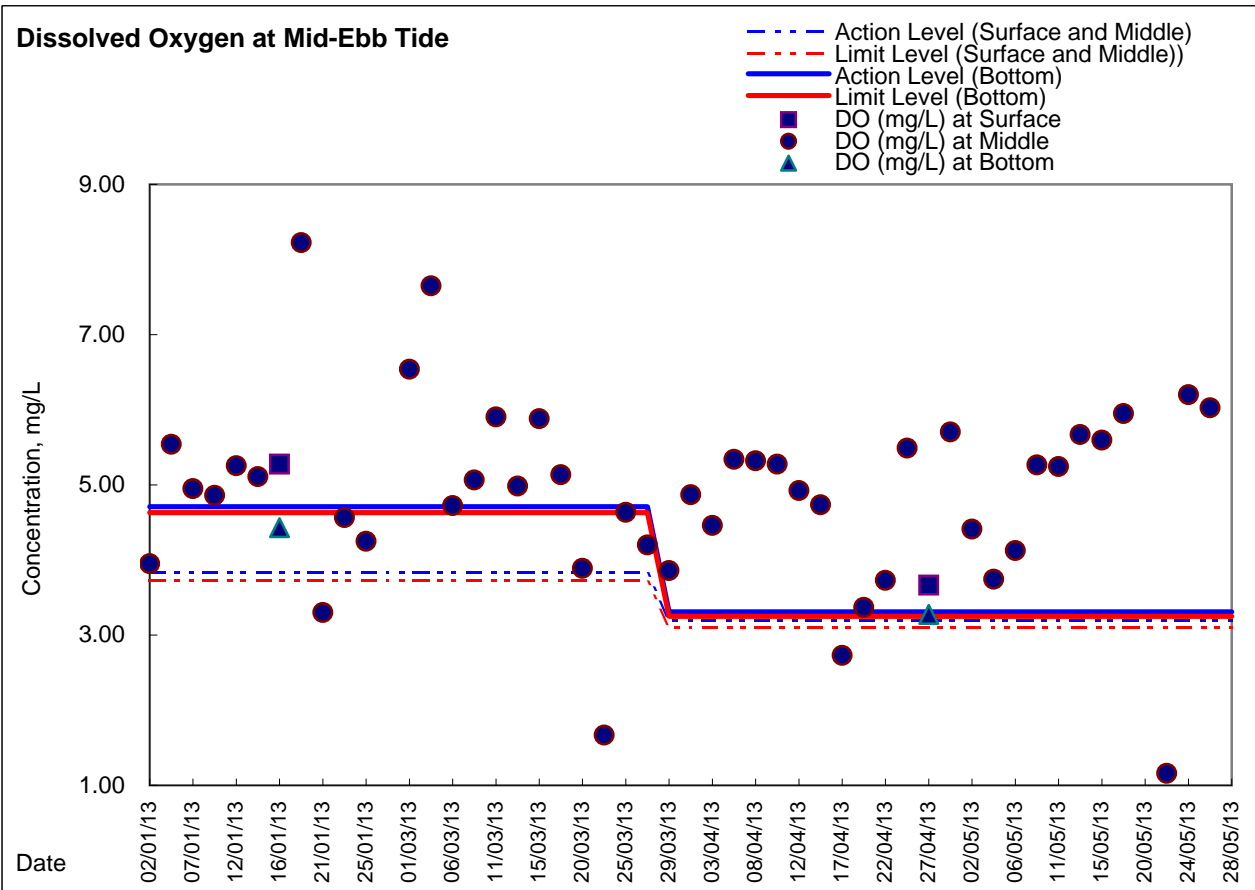
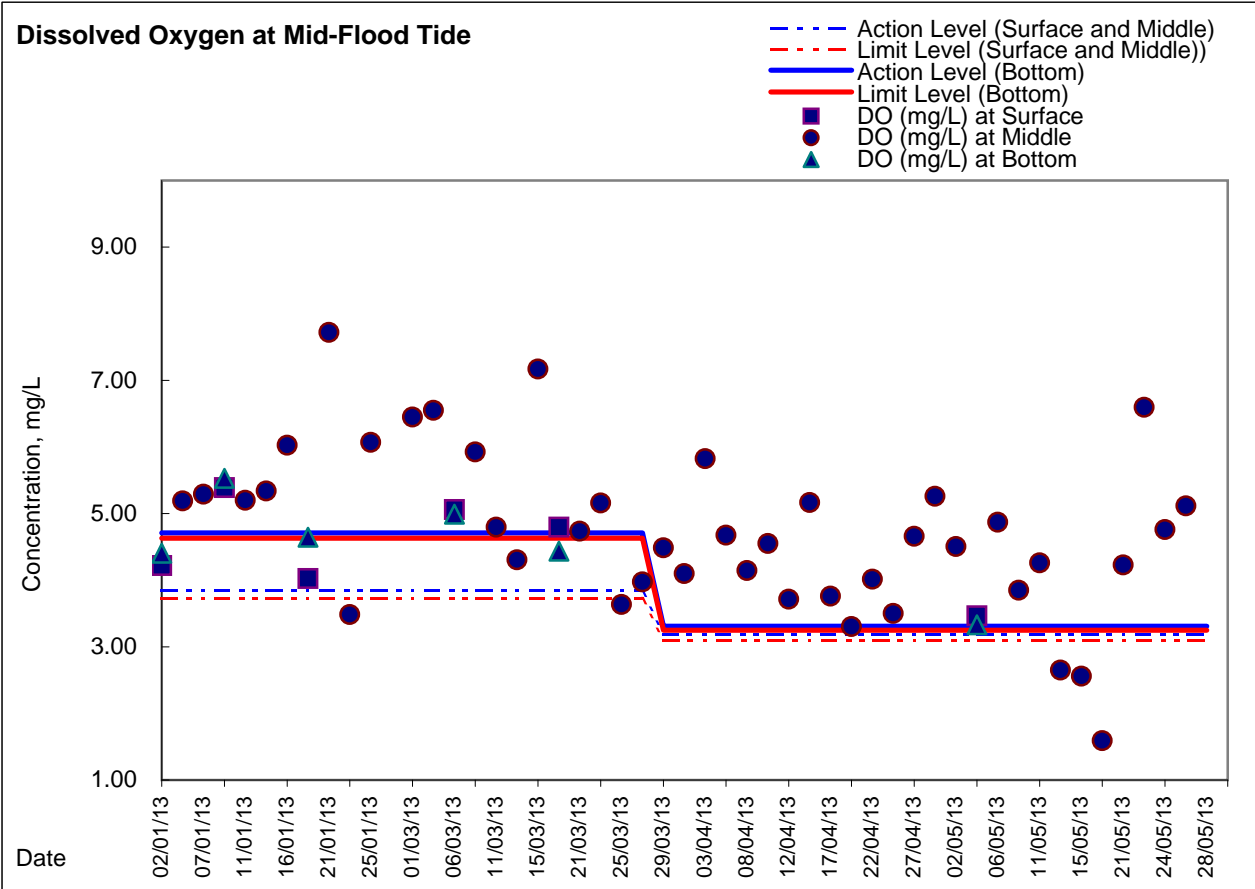




### Graphic Presentation of Enhanced Water Monitoring Results (DO) at C7 - Windsor House



**Graphic Presentation of Enhanced Water Monitoring Results (DO) at Ex-WPCWA SW  
- South-western corners of ex-Public Cargo Works Area**



**Graphic Presentation of Enhanced Water Monitoring Results (DO) at Ex-WPCWA SE  
- South-eastern corners of ex-Public Cargo Works Area**

